

## Universal Remote-Control JJ-RC-SM24 Instructions

Please read the instructions thoroughly **BEFORE** beginning setup. The universal remote control can be used to activate up to two devices such as garage door openers and/or gate openers, and each button of the remote can be set to a different version of control if needed see compatibility list below.

1. Start with the gate or garage door closed.
2. Determine if your opener uses a learn button to add a remote or if it uses code switches (See Compatibility List).
3. Remove the access cover of the remote by sliding it off in the direction of the arrow giving access to the program button and code switches (Fig1).

### Programming for code switch systems:

4. Match the code switches in the remote to the same on/off positions as the working remote or radio receiver.
5. Press and hold the program button on the remote until the LED indicator light comes on (about two seconds) then release the button (Fig 2).
6. Press and release the button you wish to use on the remote, pausing between presses until the indicator light stops flashing the opener activates, press and release the program button on the remote so it memorizes the setting.
7. Repeat the process for the second button, if need, using the code switch or learn button instructions used for that device.
8. Test the remote to verify that it is working correctly and then slide the access cover back into place.

### WARNING

To prevent possible **SERIOUS INJURY** or **DEATH** from a moving gate or garage door:

- **ALWAYS** keep remote controls out of reach of children. **NEVER** permit children to operate or play with remote control transmitter
- Activate gate or door **ONLY** when it can be seen clearly, is properly adjusted and there are no obstructions to door travel
- **ALWAYS** keep gate or garage door in sight until completely closed. **NEVER** permit anyone to cross path of moving gate or door.

### Programming for learn button systems:

4. Locate the learn button on your gate or garage door opener.
5. Press and hold the program button on the remote until the LED indicator light comes on (about two seconds) then release the button (Fig 2).
6. Press and release the learn button on the opener so the indicator light comes on.
7. Press and release the button you wish to use on the remote, pausing between presses, so the indicator light stops flashing until:
  - A) There is a click from the opener
  - B) The openers light comes on or flashes
  - C) The LED indicator light on the opener comes on solid if it was flashing or flashes if it was solid
  - D) The opener activates.
8. Then press and release the program button on the remote so it memorizes the setting.
9. Repeat the process for the second button, if need, using the code switch or learn button instructions used for that device.
10. Test the remote to verify that it is working correctly and then slide the access cover back into place.

Press Then Slide Battery Cover Up For Access

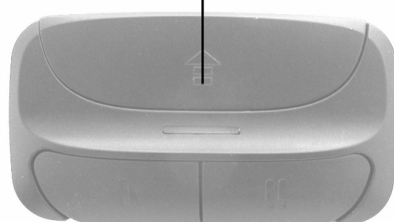


Fig 1.

Battery Code Switches Program Button

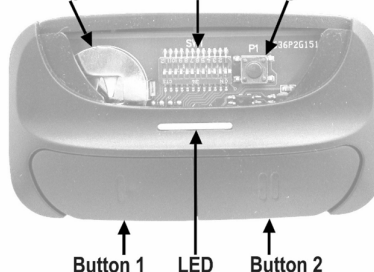


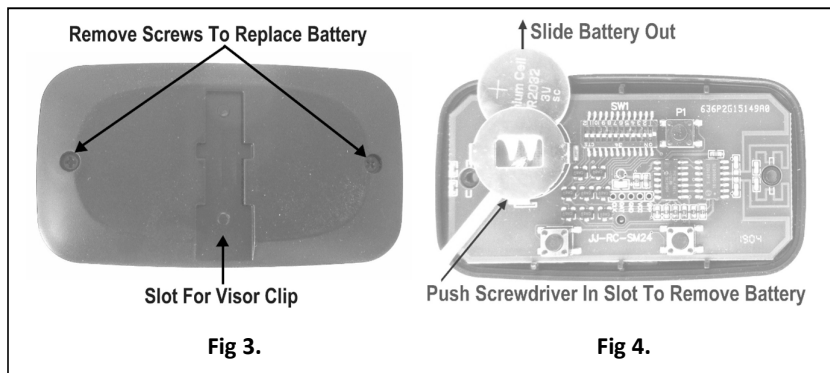
Fig 2.

### Compatibility List And Number Of Button Presses Needed

1 time	Linear® MegaCode 1997-Current 318MHz
2 times	Chamberlain®* Orange Button 1997-2005 390MHz
3 times	Chamberlain®* Purple Button 2005-Current 315MHz
4 times	Chamberlain®* Green Button 1993-1996 390MHz
5 times	Genie Overhead Door® Intellicode 2005-Current 315MHz
6 times	Genie Overhead Door® Intellicode 1995-Current 390MHz
7 times	Stanley® Security Code 1998 310MHz
8 times	Chamberlain®* Yellow Button 2011-Current 310/315/390MHz
9 times	Wayne Dalton® rolling code 1999-Current 372.5MHz
12 times	Genie® 12 Code Switch 1985 390MHz
13 times	Linear Multi-Code® 10 Code Switch 300MHz
15 times	Stanley Multi-Code® 10 Code Switch 310MHz
16 times	Genie® 9 Code Switch 390MHz
17 times	Linear Moor-O-Matic® 8 Code Switch 310MHz

\*Access Master, Do-It, Gatheron, LiftMaster, Link Control, Master Mechanic, Raynor, Sears Craftsman, Steel Craft, True Value are compatible with Chamberlain technology.

**Battery Replacement:** To replace the battery remove the two screws from the back of the remote and the top of the case will separate (Fig 3). Using a small screwdriver or paper clip put pressure at one of the slots of the battery holder to slide the battery down until it can be removed (Fig 4). Replace only with a 3V CR2032 battery and slide it into place making sure that the side with writing is facing up. To close the case, have the top of the remote facing down and put the back on it, making sure that the two buttons are at the same side as the two buttons on the circuit board then insert the screws.



**Warranty:** This remote carries a one-year manufactures warranty against defects in workmanship or materials commencing from the purchase date of the remote. For warranty claims the remote needs to be returned to the dealer or distributor it was purchased from. Remotes4Less does not assume and is not responsible for any real or consequential damages from claims against performance of this remote, nor is it liable for any costs related to loss of life, property, or revenue and will assume no costs of reinstallation or removal.

### WARNING

To prevent possible **SERIOUS INJURY** or **DEATH**:

- **NEVER** allow small children near batteries
- If battery is swallowed, immediately notify doctor.

To reduce risk of fire, explosion or chemical burn:

- Replace **ONLY** with 3V CR2032 coin battery.
- **DO NOT** recharge, disassemble, heat above 212°F (100°C) or incinerate.

**NOTICE:** To comply with FCC and or Industry Canada rules (IC), adjustment or modifications of this transmitter are prohibited, except for changing the signal learned or replacing the battery.

### THERE ARE NO OTHER SERVICABLE PARTS.

Tested to comply with FCC Standards **FOR HOME OR OFFICE USE.**

Operation is subject to the following two conditions: (1) this device may not cause any harmful interference, and (2) this device must accept any interference received, including interference that may cause undesirable operation.

© 2019 Remotes4Less All rights reserved.

Distributed by: Remotes4Less, Apple Valley CA USA [www.remotes4less.com](http://www.remotes4less.com)

Manufactured by: Giant Alarm System Co. Ltd. China