

Universal Garage Door Opener Wireless Keypad JP-LT Manual 3.0

Please read instructions thoroughly **BEFORE** beginning. Start with garage door **CLOSED**. Install the battery and program the keypad prior to installation.



Determine your garage door opener type -Smart/Learn Button or DIP Switch, they are located on motor unit or external receiver. Our Universal Keyless Entry Keypad can programmed the Chamberlain, Sears Craftsman, Liftmaster, Mechanic and Do It,Genie Intellicode, Overhead Door, Stanely, Wayne Dalton, Linear etc major brand garage door openers.It has 2 channel can control up 2 garage door independently.



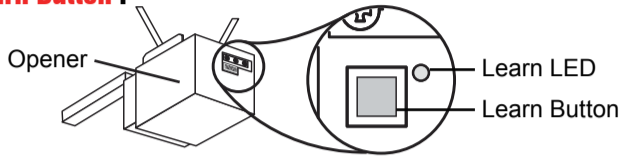
NOTE: Factory set PIN Code 1111# for 1st channel, 2222# for 2nd channel.
If you want to change the factory set PIN code before programming, please go to next page "Change an Existing PIN Code".

DETERMINE GARAGE DOOR OPENER TYPES:

Proceed with instructions according to your garage door opener type. NOTE: Your motor unit and/or remote control may look different.

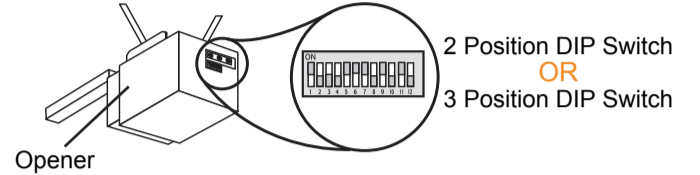
TYPE 1

Chamberlain, LiftMaster, Sears Craftsman, Master Mechanic, Do It, Stanley, Genie Intellicode, Overhead Door, Wayne Dalton and Linear etc garage door openers with: **Smart/Learn Button**.



TYPE 2

Chamberlain, LiftMaster, Genie, Sears Craftsman, Master Mechanic, Do It, Moore-O-Matic and Linear etc garage door openers with: **DIP Switches**.

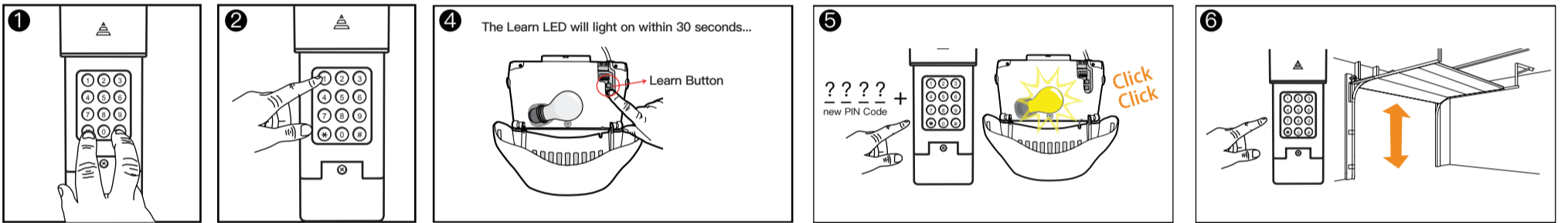


Programming TYPE 1

- Press and hold the ***** and **#** button at the same time for enter into program model.
- Press button **1#** OR **2#** of your choice.
NOTE: "1#" mean enter program for 1st channel, "2#" mean enter program for 2nd channel.
- Enter your opener ID __ end up with **#**. Determine your opener ID using the Brand List chart 1.
* For example program the opener type "Chamberlain green button" corresponding the opener ID is 04, so enter **04#**.
- Press and release the **Learn Button** on the garage door opener within 1 minute.
- Enter your existing 4-digit PIN Code ___# end up with **#** button.
*** NOTE: For Genie and Overhead Door Opener are special,you should press the PIN code twice. Such as press your existing PIN Code 1 time ___#, then press again ___#.**
- To test,enter your existing PIN Code with **#** again. Then the garage door opener will activate.
* To program another channel,please repeat above steps with a new PIN Code for different opener.

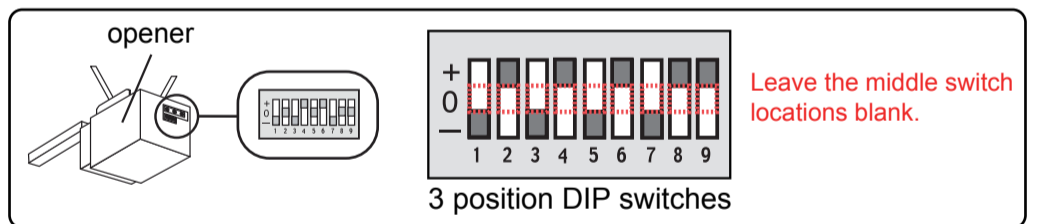
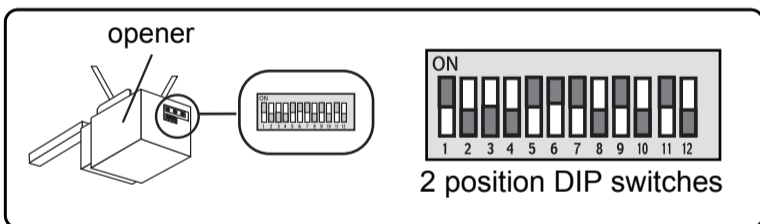
Opener ID	Brand	Type/Learn Button
01	Linear	MegaCode 318MHz 1997-Current
02	Chamberlain	Red/Orange button 390MHz 1997-2005
03	Chamberlain	Purple button 315MHz 2005-Current
04	Chamberlain	Green button 390MHz 1993-1996
05	Genie Overhead Door	Intellicode 315MHz 1995-Current
06	Genie Overhead Door	Intellicode 390MHz 2005-Current
07	Stanley	Security code 310MHz 1998-Current
08	Chamberlain	Yellow button 310/315/390MHz 2011-Current
09	Wayne Dalton	Rolling code 372.5MHz 1999-Current

Chart 1

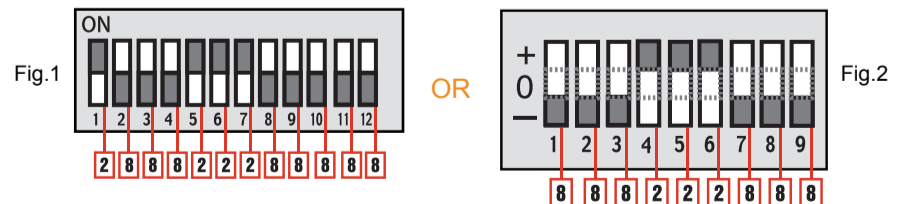
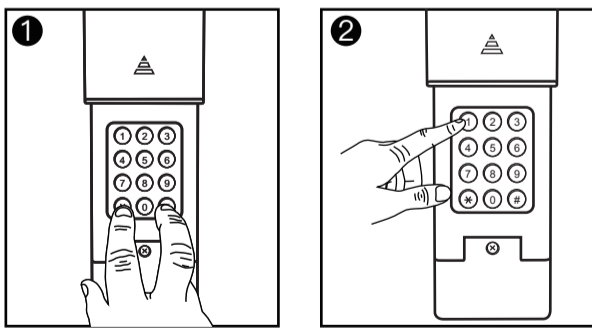


Programming TYPE 2

For some old garage door opener/receiver that using the "DIP switches" system has 2 position or 3 position with switches number between 1-12. If your existing opener/receiver with 3 position switches, you **MUST** set them in "+" or "-" location first,do not use the "0" position.



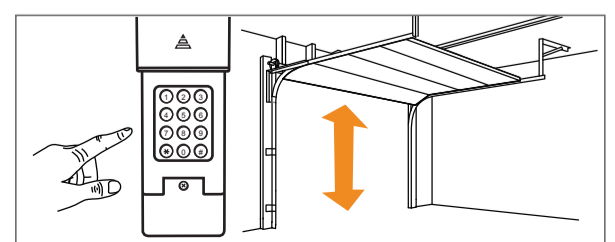
- Press and hold the ***** and **#** button at the same time for enter into program model.
- Press button **1#** OR **2#** of your choice.
* "1#" mean enter program for 1st channel, "2#" mean enter program for 2nd channel.
- Enter your opener ID __ end up with **#**.
* For example program the opener type "Chamberlain 8 position" corresponding the opener ID is 14, so enter **14#**.(Determine your opener ID using the Brand List chart 2.)
- Enter the Keypad button for match your existing openers.
If your opener with 2 Position DIP Switches,the DIP switch is in the "+" position place a **2**, "-" position place a **8**, end with button **#**.
Note the numerical value in order of the DIP switch locations.
Then the garage door opener will activate.
* Such as program opener with a 2 Position 12 DIP Switch "ON-OFF-OFF-OFF-ON-ON-ON-OFF-OFF-OFF-OFF",corresponding press the button "2-8-8-8-2-2-2-8-8-8-8-8".(Fig.1)
If your opener with a 3 position DIP Switch,just leave the middle switch locations blank,then proceed as above. (Fig.2)
* **Make sure the DIP switch locations and the keypad button must match "+ "=2, "- "=8.**



Opener ID	Brand	Type/Dip Switch	Opener ID	Brand	Type/Dip Switch
10	Chamberlain	9 DIP Switch 390MHz 1990-1992	15	Stanley Multi code	10 DIP Switch 310MHz
11	Chamberlain	9 DIP Switch 315 MHz 1983-1989	16	Genie	9 DIP Switch 390MHz
12	Genie	12 DIP Switch 390MHz 1985	17	Linear Moore-O-Matic	8 DIP Switch 310MHz
13	Linear Multi code	10 DIP Switch 300MHz	18	Chamberlain	7 DIP Switch 390MHz
14	Chamberlain	8 DIP Switch 390MHz			

Chart 2

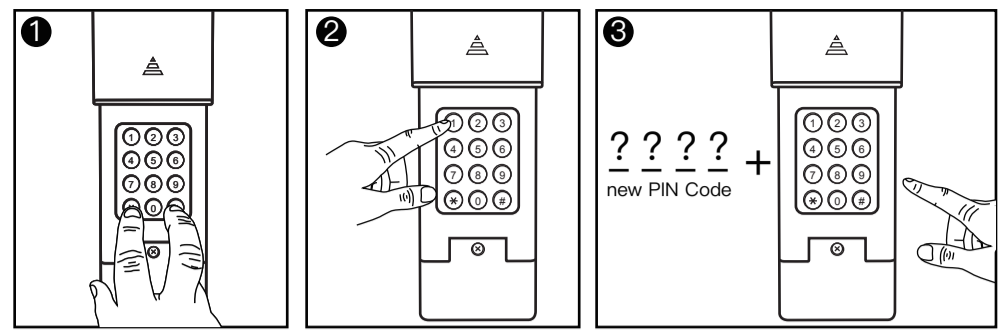
- Enter your PIN Code with **#**. Then the garage door opener will activate.
NOTE: For Genie and Overhead Door Opener is special,you should press the PIN code twice. Such as press your PIN Code 1 time ___#, then press again ___#.



Change an Existing PIN Code

1. Press and hold the * and # button at the same time for enter into program model.
 2. Enter a 4-digit factory set PIN Code **1111#** OR **2222#** of your choice.
NOTE: Factory set PIN code 1111# for 1st channel, 2222# for 2nd channel.
 3. Enter a 4-digit new PIN Code _____ end up with # button for confirm.
- * The new PIN code you set MUST be remembered !

(Write opener ID here: __)

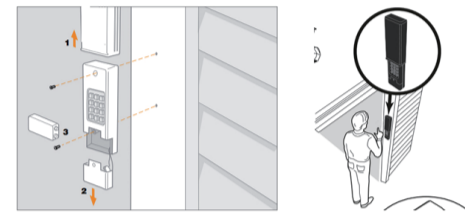


Operation instructions

- Opener activates 4-digit password and “#” enter button is pressed. If wrong numbers are accidentally pressed, correction can be made immediately. The “#” Enter button will transit only the last four digits.
 - The keypad will exit the programming mode if the keypad did not receive any commands within 6s.
 - Factory default set Wireless Keypad with beep alarm and back indicator light.
 - When programming, if user key in users’ PIN Code more than 4 digits, the keypad would recognize it as incorrect operation, then exit programming mode.
- Keypad allows two attempts of wrong entire pin codes. After the third wrong entire pin codes key-in, the keypad will be locked for 2 minutes with 3 beeps and red LED light goes on. 2 minutes later, keypad would have one beep sounds and red. LED indicator goes off to indicate the user keypad is unlock.

Installation

- 1 Select a location to mount the Keypad at a minimum height of 5 feet (1.5m) out of the reach of Children.
- 2 Remove battery cover and battery.
- 3 Mark the top mounting hole and drill 1/8 inch(3.2mm) pilot hole.
- 4 Install the top screw, allowing 1/8 inch (3.2mm) to protrude above the surface, position the keypad over the top screw.
- 5 Mark the bottom hole and drill 1/8 inch (3.2 mm) pilot hole. Install the bottom screw. Do not overtighten to avoid cracking the plastic housing.
- 6 Re-install battery and replace cover.

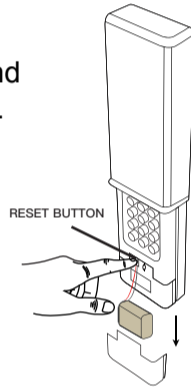


Factory Reset

If you get something wrong when program or entry PIN Code and can not proceed with any operation, you could reset the keypad.

Remove the battery cover and you will see a Reset Button. Press and hold the reset button for about 5s a buzzer sound to confirm the keypad has been reset successfully.

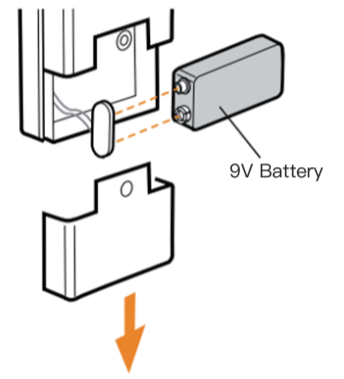
Now the keypad has restore Factory Set model with PIN Code 1111# for 1st channel and 2222# for 2nd channel.



Battery

Replace the 9-Volt battery when keypad light becomes dim or does not light up. Slide cover up, remove battery cover, and replace battery.

Re-programming maybe necessary.



Trouble Shooting

Q: Why won't my keypad work?

- Did the keypad lights come on when you entered your PIN ? If the keypad lights do not turn on when you press a button, it indicates that the battery needs to be replaced. Replace with a 9V battery.
- Try reprogramming the keypad to the garage door opener.
- Make sure the keypad is compatible with your garage door opener.

Q: Will I have to reprogram the keypad after changing the battery?

- The keypad should retain its memory. If the keypad no longer operates the operator. Reprogram the keypad to your system.

Q: Where is my Learn Button or DIP Switches on my gate?

- Locate the Learn Button or DIP Switches on the garage door opener/receiver. Most gate openers have a built-in radio receiver or an external receiver.

Q: Can I program the keypad to a second garage door opener?

- Yes. Our garage door keypad can support 2 garage door opener independently.

Q: How can I reset the keypad when I forgot the entry PIN code ?

- Remove the battery cover and you will see a Reset Button. Long press the Reset Button about 5s, you will heard a beer, now the keypad has been resettled successfully .

WARNING

To prevent possible SERIOUS INJURY from a moving garage door :

- Install Keypad within sight of garage door, out of reach of children at a minimum height of 1.5m above floors, landings, steps or any other adjacent walking surface, and away from ALL moving parts of door.
- Activate gate or door ONLY when it can be seen clearly, is properly adjusted, and there are no obstructions to door travel.
- NEVER permit children to operate or play with Keypad.
- ALWAYS keep gate or garage door in sight until completely closed. NEVER permit anyone to cross path of moving gate or door.

WARRANTY

One Year Limited Warranty.

Thank you for purchasing our products in AMAZON. Our products are covered 1 year limited warranty from the date of its original purchase. If any problems occur, please contact us for help.

Support Email: sales06@jujiang.net.cn

