

# OWNERS MANUAL

## Model 200 Lift- Master Universal Receiver

Manufactured under 1 or more of the following US patents:  
3,445,848; 3,906,348; and 4,037,201

### SPECIFICATIONS

Output Rating ..... 3 Amps 120VAC or DC Max.  
Power ..... 18V to 35V, @ 30ma  
RF Frequency ..... 390MHz

If power is other than shown in specifications,  
Accessory Transformer Model 85 is required.

Accessory Transmitters  
Series 50

## INSTALLATION INSTRUCTIONS



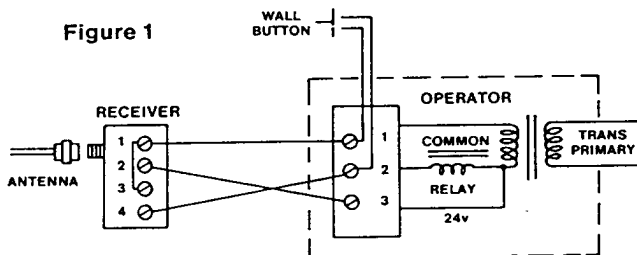
**DISCONNECT POWER TO OPERATOR BEFORE INSTALLING RECEIVER OR SETTING/CHANGING CODE.**

The receiver and antenna use TV Type F coaxial connectors. The antenna can be plugged directly onto the receiver, or mounted to a bracket and connected to the receiver with Model 86 Coaxial Cable Kit, depending on your requirements.

Fasten receiver securely with screws through the two holes provided in the cover flanges. Select a location that allows access to the terminals and space for the antenna (as far from metal structures as possible and preferably in a vertical position).

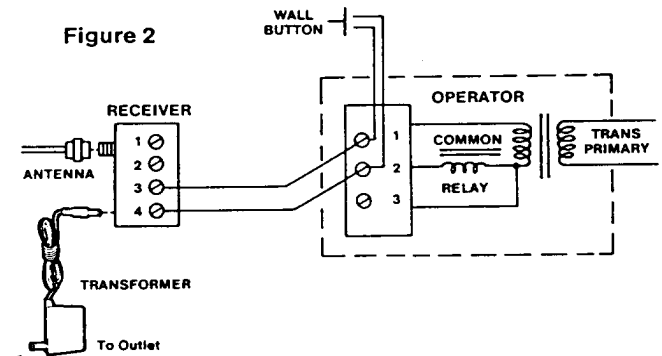
**FIGURE 1 - WITHOUT TRANSFORMER:** Connect bell wire (not supplied) to receiver terminals 1 and 2, and to operator radio power terminals. (On operators with the terminals labeled 1, 2 and 3, it will usually be 1 and 3). All terminals are unpolarized.

Also, connect the bell wire to receiver terminal 4 and operator terminal 2. Make a jumper wire connection to receiver terminals 1 and 3 as shown.



**FIGURE 2 - WITH TRANSFORMER MODEL 85:**

Receiver terminals 1 and 2 are not used. Connect bell wire to receiver terminals 3 and 4 and to operator relay control terminals 1 and 2. The transformer plugs into a 120V outlet



## SETTING THE CODE IN RECEIVER AND TRANSMITTER(S)

Pry open the receiver cover and locate the 9 code switches. Open the transmitter case. With a screwdriver or a pen, slide one or more of the receiver code switches to a plus, center (0) or minus position. If transmitter has 8 code switches, set receiver code switch 9 to (0).

Hold transmitter circuit board alongside the receiver switches. Set transmitter code switches to matching positions. Reassemble the receiver and transmitter. Reconnect power to the operator.

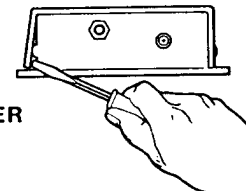
**IMPORTANT: Code settings must be exactly the same in receiver, transmitter and all additional transmitters used to operate the device.**

**NO USER SERVICEABLE PARTS.**

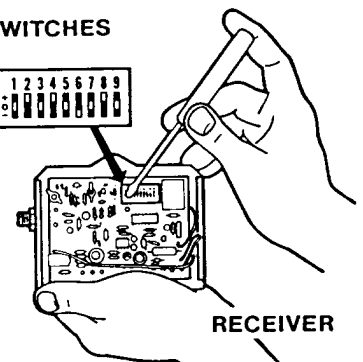
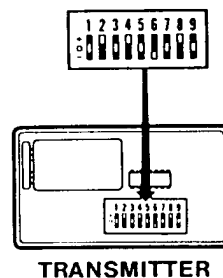
### ACCESSORIES

Model 85 Transformer  
Model 86 Coaxial Cable Kit

**OPEN RECEIVER**



**MATCH CODE SWITCHES**



Printed in Mexico