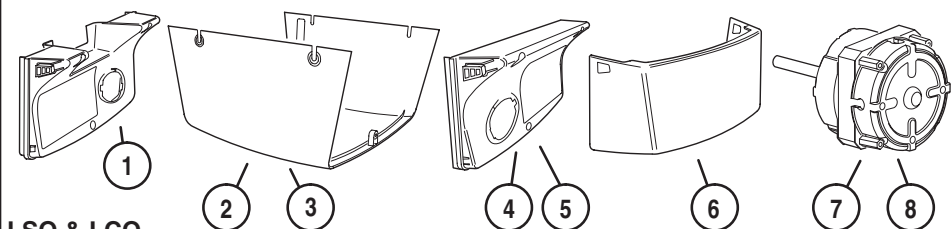
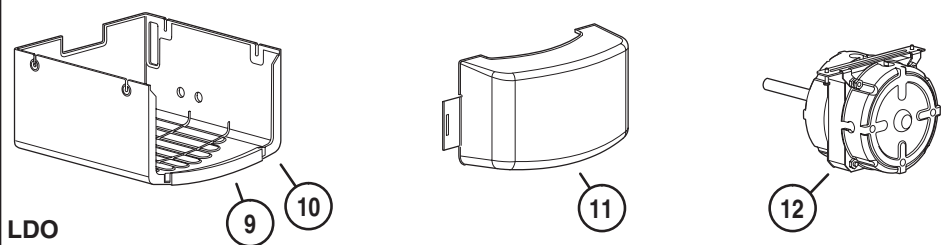


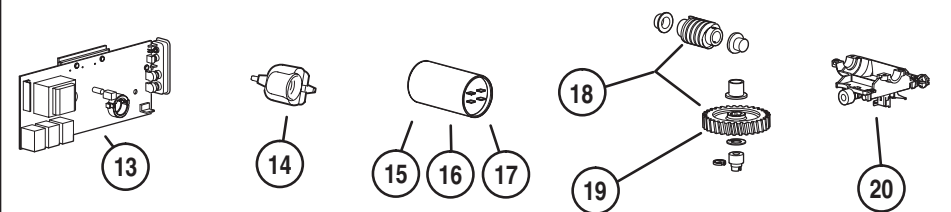
OPERATOR HEAD PARTS



LSO & LCO

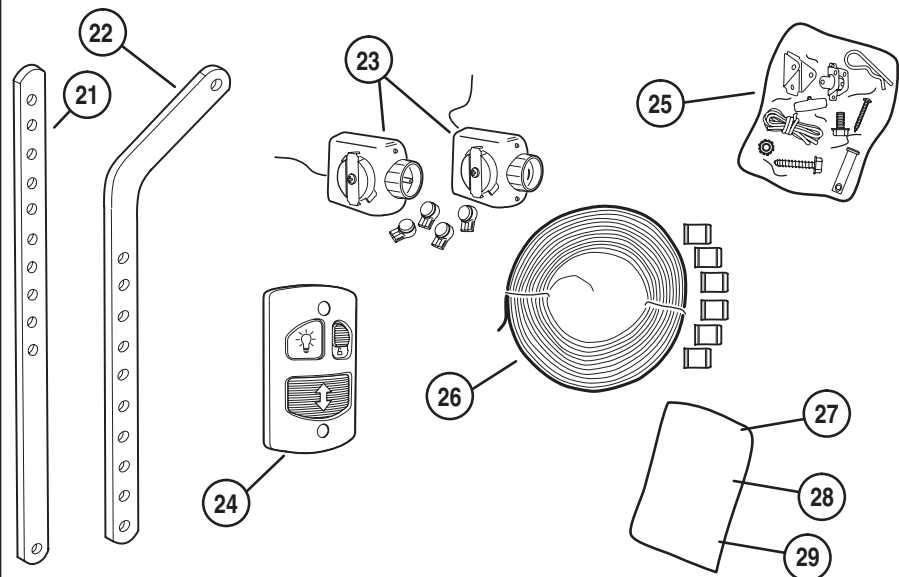


LDO



LSO, LDO, & LCO

MISCELLANEOUS OPERATOR PARTS



LSO, LDO, & LCO

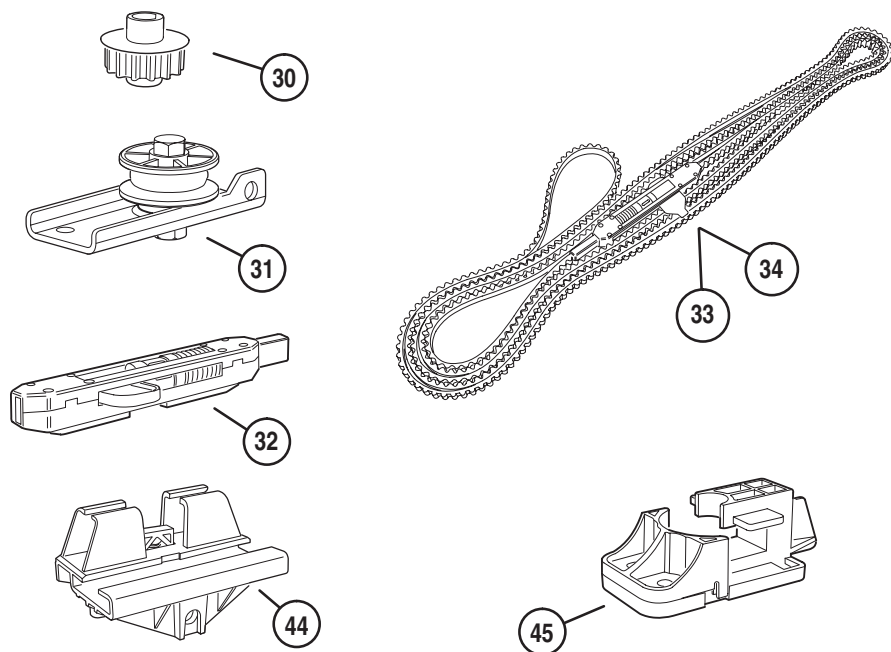
Linear
Building On Innovation.

GARAGE DOOR OPERATOR REPLACEMENT PARTS LIST

LSO
LDO
LCO
HCT
HBT
HCI

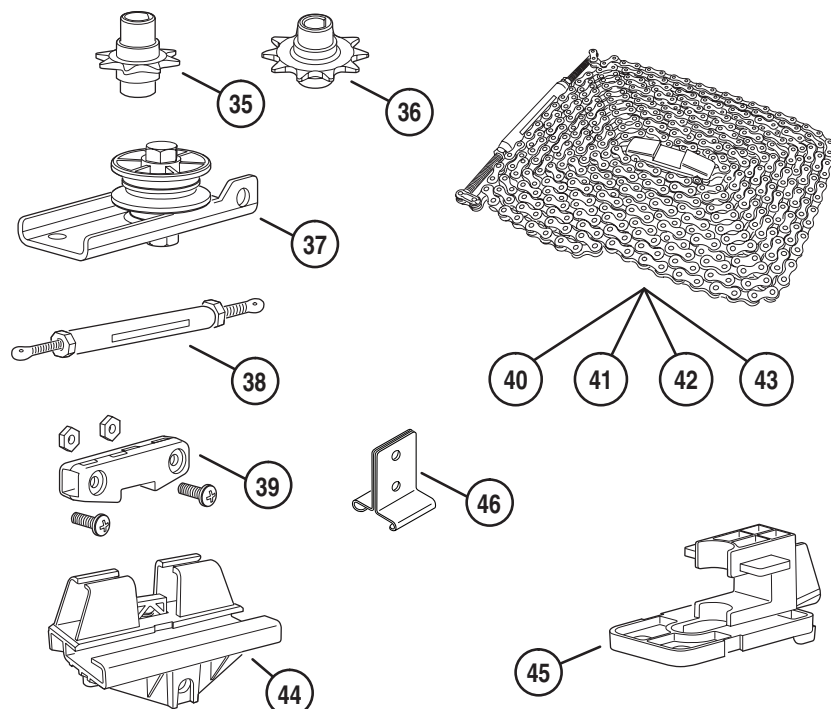
ITEM #	REPLACEMENT PART	PART #
1	REAR LSO& LCO END COVER (WITH LABELS)	HAE00041
2	MAIN LSO COVER (WITH LABELS)	HAE00026
3	MAIN LCO COVER (WITH LABELS)	HAE00042
4	FRONT LSO COVER (WITH LABELS)	HAE00028
5	FRONT LCO COVER (WITH LABELS)	HAE00043
6	LSO & LCO LENS COVER (FITS BOTH ENDS)	220918
7	LSO MOTOR	220919
8	LCO MOTOR	227645
9	1/3 HP LDO COVER (WITH LABELS)	HAE00011
10	1/2 HP LDO COVER (WITH LABELS)	HAE00012
11	LENS COVER	217645
12	LDO MOTOR	217881
13	CONTROL BOARD (LOGIC/RECEIVER/TORQUE)	HAE00040
14	LAMP SOCKET ASSEMBLY	218014-02
15	1/3HP CAPACITOR (43-53 MFD) <i>FOR LDO33 ONLY</i>	219109
16	1/2HP CAPACITOR (53-64 MFD) <i>FOR LDO50 ONLY</i>	219110
17	3/4HP CAPACITOR (65 MFD) <i>FOR LCO75 ONLY</i>	232168
18	HELICAL AND WORM GEARS (WITH GREASE)	HAE00047
19	HELICAL GEAR (WITH GREASE)	HAE00048
20	LIMIT SWITCH ASSEMBLY	HAE00004
21	DOOR ARM - STRAIGHT	227966
22	DOOR ARM - BENT	227967
23	SAFETY BEAM SENDER & RECEIVER (WITH WIRE)	HAE00002
24	WALL STATION	HAE00001
25	COMPLETE HARDWARE KIT	220205-02
26	WIRE KIT (15 SETS OF WIRE AND CLIPS)	HAE00044
27	LDO INSTRUCTIONS AND LABELS	HAE00030
28	LSO INSTRUCTIONS AND LABELS	HAE00031
29	LCO INSTRUCTIONS AND LABELS	HAE00045

OPERATOR RAIL PARTS



HBT BELT DRIVE RAILS

HCT and HCI CHAIN DRIVE RAILS



Linear
Building On Innovation.

GARAGE DOOR OPERATOR REPLACEMENT PARTS LIST

LSO
LDO
LCO
HCT
HBT
HCI

ITEM #	REPLACEMENT PART	PART #
30	HBT DRIVE SPROCKET	220499
31	HBT PULLEY AND BRACKET	218954-03
32	HBT INNER SLIDE ASSEMBLY	HAE00022
33	7 FOOT BELT ASSEMBLY	HAE00023
34	8 FOOT BELT ASSEMBLY	HAE00033
35	HCT DRIVE SPROCKET	217436
36	HCI DRIVE SPROCKET	227653
37	HCT PULLEY AND BRACKET	HAE00014
38	HCT TURNBUCKLE ASSEMBLY	HAE00013
39	HCT INNER SLIDE ASSEMBLY	HAE00018
40	7 FOOT CHAIN ASSEMBLY	HAE00015
41	8 FOOT CHAIN ASSEMBLY	HAE00032
42	10 FOOT CHAIN ASSEMBLY	HAE00017
43	12 FOOT CHAIN ASSEMBLY	HAE00046
44	TROLLEY ASSEMBLY	218189-01
45	DRIVE SPROCKET HOLDER AND BELT CLAMP <i>BELT CLAMP FOR USE ON HBT BELT RAILS ONLY</i>	HAE00049
46	CENTER SUPPORT BRACKET	CSB