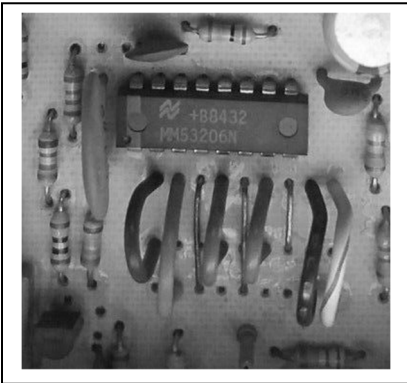


Overhead Doors Programming Instructions

There are several different versions of Overhead Door code switch remote openers that have different ways to program them and the different instructions are listed below. If an existing one button remote is available then first see if matching up the code switches of the new remote to the same settings as the current remote works. Some of the original Overhead Door remotes have a learn button in them so the code switch setting that you see may not be what has been used to learn the remote with.

NOTE: Overhead Door used several different frequencies for the radio control and you must have the correct frequency remote or it will not work. The frequency should be on the opener either outside or on the transformer that is inside the opener on the circuit board. The frequencies that were used are: 312, 340, 360, 380, 390

Wire jumpers on main circuit board



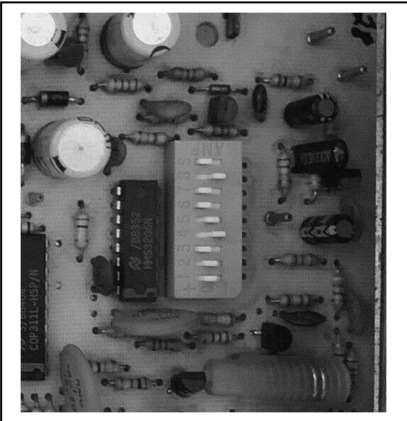
Green (left side in photo) is for code switch 1.

Any jumpers that are cut would be set to 0.

Wire jumper from top to center would be +

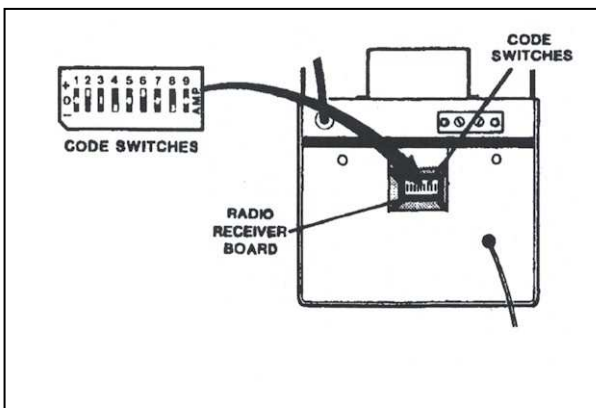
Wire jumper from top to bottom would be -

Code switches on main circuit board

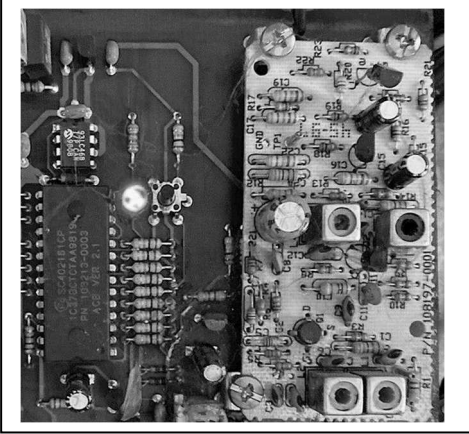


With the code switch on the main circuit board you need to match up the 9 three position code switches of the remote to the same settings as those on the circuit board.

Code switches accessible from the back of the opener



Learn button on the main circuit board



With the learn button on the main circuit board you can first see if setting the code switches to the same settings as an existing working remote.

If there is no existing remote then set any code switch setting in the remote of your choice then press and release the learn button on the openers circuit board then press and release the remotes button

Three buttons accessible from back on opener

Models 455, 550, 555, 556, 656



1. On the back of the motor press and release the far-right button labeled SC.
2. Light on the motor head will flash once and a click should be heard.
3. Press the remotes button and light will flash twice and two clicks should be heard.
4. Press the remote button and the light will flash 3 times and three clicks should be heard.
5. Press the remote button and the light will flash 4 times and four clicks should be heard.
6. Press the remote button and the light will flash 5 times and five clicks should be heard.
7. Light will go out for about 15 seconds then come back on then off.
8. Wait 60 seconds and the lights should flash and a click heard. Programming is completed and you can test the remote.