



COMMERCIAL DOOR AND GATE OPERATORS SINCE 1969



MANUFACTURED BY V.E. POWER DOOR CO, INC.

2019

CATALOG



Proudly Distributed by CES

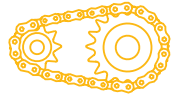
855-810-0124

www.PowerMasterOperators.com



TABLE OF CONTENTS

Warranty Information	3
Amperage Rating Chart	4
Horsepower Selection Guide for Sectional Doors.....	5
Horsepower Selection Guide for Rolling Doors and Grilles	6
Door and Grille Applications.....	7-12
NEMA 4 and NEMA 7 & 9 Applications	13-15
Specialty Applications	16-18
Gate Size and Weight Table	19
Slide Gate Operators	20-22
Swing Gate Operators.....	23-25
Barrier Gate Operators.....	26
Weight Resource Guide.....	27
NEMA 1 Controls.....	28-30
NEMA 3R Controls	31
NEMA 4 Controls.....	32-34
NEMA 7 & 9 Controls	35



KNOW YOUR WARRANTY

MECHANICAL PARTS:

PowerMaster warrants all DOOR OPERATORS (MG, H, J, T, SL categories) to be free of defects in materials and workmanship for a period of two (2) years from date of manufacture, provided that product has been registered. A one year warranty applies if product has not been registered.

PowerMaster warrants all GATE OPERATORS (Swing, Slide, Barrier categories) to be free of defects in materials and workmanship for a period of five (5) years from date of manufacture, provided that product has been registered. A one year warranty applies if product has not been registered.

ELECTRICAL PARTS (including boards, switches, relays, etc):

PowerMaster warrants electrical parts for a two (2) year period, provided that product has been registered. A one year warranty applies if product has not been registered.

If any part is found to be defective during this period, new parts will be furnished free of charge. Failure of this product due to misuse, improper installation, alterations, vandalism, acts of God, or lack of maintenance is ***not*** covered under this warranty, and voids any other implied warranties herein.

PowerMaster is ***not responsible*** for any labor charges incurred in connection with the installation of warranted parts.

IMPORTANT!!

In order to activate this warranty, the registration form found with your operator **MUST BE COMPLETED AND RETURNED WITHIN THIRTY CALENDAR DAYS FROM DATE OF PURCHASE**. Visit our manufacturer's website, www.PowerMasterNY.com, and click on the ***Register your Product*** link.

If registration is not activated, a **ONE YEAR** warranty from date of manufacture will apply for all claims.

SINGLE PHASE	HORSEPOWER	115 VOLTS	220 VOLTS
	1/2 HP	10 AMP	5 AMP
	3/4 HP	12 AMP	8 AMP
	1 HP	15 AMP	10 AMP
	1-1/2 HP	20 AMP	12 AMP


THREE PHASE	HORSEPOWER	230 VOLTS	460 VOLTS
	1/2 HP	2.4 AMP	1.2 AMP
	3/4 HP	3.4 AMP	1.7 AMP
	1 HP	3.8 AMP	1.9 AMP
	1-1/2 HP	4.6 AMP	2.3 AMP
	2 HP	6.8 AMP	3.4 AMP
	3 HP	8.4 AMP	4.2 AMP

CYCLES PER HOUR GUIDE: DOOR OPERATORS

LIGHT DUTY OPERATORS (MH, MJ, MT)	UP TO 10 CYCLES PER HOUR
STANDARD, BELT-DRIVEN OPERATORS (H, J, T)	UP TO 30 CYCLES PER HOUR
STANDARD, GEAR-REDUCED OPERATORS (MG, GT)	UP TO 45 CYCLES PER HOUR
HI-CYCLE MODIFIED OPERATOR	APPROX. 60 CYCLES PER HOUR

HORSEPOWER SELECTION GUIDE

FOR SECTIONAL DOORS


		MAXIMUM SQUARE FOOTAGE				
MODEL	HP	FIBERGLASS	24GA STEEL, 22GA STEEL, ALUMINUM	20GA STEEL WOOD, 24GA STEEL INSULATED	16GA STEEL, 20GA STEEL INSULATED	16GA STEEL INSULATED
T,J,H	1/2	360	325	260	230	180
	3/4	480	450	400	310	230
H	1	585	540	490	390	280
GT	1/2	400	350	320	250	200
	3/4	560	500	450	325	250
	1	625	575	520	400	300
APT	1/2	360	325	260	230	180
MT	1/2	300	270	200	160	120

NOTES:

- USE 24 GAUGE LIMITS FOR ALUMINUM SERVICE DOOR.
- ALWAYS CHOOSE H OR MG UNITS FOR DOORS THAT ARE TOO LARGE FOR MANUAL OPERATION.
- DOORS AND BALANCE SPRINGS MUST BE IN GOOD OPERATING CONDITION AND MUST BE ADJUSTED TO MANUFACTURER'S SPECIFICATIONS.
- DO NOT ATTEMPT TO COMPENSATE FOR A DOOR WITH IMPROPER INSTALLATION AND/OR BALANCE SPRINGS.
- THIS CHART IS BASED UPON DOOR TRAVEL OF APPROXIMATELY 8 INCHES PER SECOND. DOORS TRAVELING IN EXCESS OF 8 INCHES PER SECOND REQUIRE INCREASED HP RATING OR DECREASED MAXIMUM SQUARE FOOTAGE RATING.
- HIGH CYCLE AND OTHER SPECIAL MODIFICATIONS HAVE DIFFERENT NEEDS.

HORSEPOWER SELECTION GUIDE

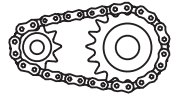
FOR ROLLING DOORS & GRILLES

		MAXIMUM SQUARE FOOTAGE								
MODEL	HP	24GA	22GA	20GA	18GA	INSULATED	STEEL GRILLE	ALUM GRILLE	STEEL COUNTER SHUTTER	ALUM COUNTER SHUTTER
MGJ	1/2						120	140	100	135
GJ	1/2	135	125	120			135	160	125	140
H&J	1/2	275	250	225	170	130	260	350	250	
	3/4	340	310	290	215	165	340	450		
D-MG	1/2	290	260	240	190	150	280	400		
MG	1/2	290	260	240	190	150	280	400		
	3/4	370	320	300	240	180	375	550		
	1	440	360	340	270	200	480	640		
	1 1/2		460	430	360	260	620			
	2			560	480	350				
	3			840	700	520				
	5			1200	920	780				
	7 1/2			1500	1100	950				

NOTES:

- ▶ Use 24 gauge limits for aluminum service door.
- ▶ Always choose H or MG units for doors that are too large for manual operation
- ▶ Doors and balance springs MUST be in good operating condition, and must be adjusted to manufacturer's specifications.
- ▶ Do not attempt to compensate for a door with improper installation and/or balance springs.
- ▶ This chart is based upon door travel of approx 8 inches per second. Doors traveling in excess of 8 inches per second require increased HP rating, or decreased maximum sq footage rating.
- ▶ High cycle and other special modifications have different needs.

THIS CHART IS INTENDED AS A GUIDELINE ONLY. PLEASE CONSULT FACTORY FOR PROPER APPLICATION, OR FOR SIZES NOT LISTED ON THIS CHART.



DOOR OPERATORS ARE AVAILABLE IN OPTIONAL DUAL VOLTAGE CONFIGURATION

PowerMaster Door & Grille operators feature solid state circuitry with feedback LEDs, onboard Open/Close/Stop buttons for service and adjustments, and auto-detect monitored photo beam for simplified installation.

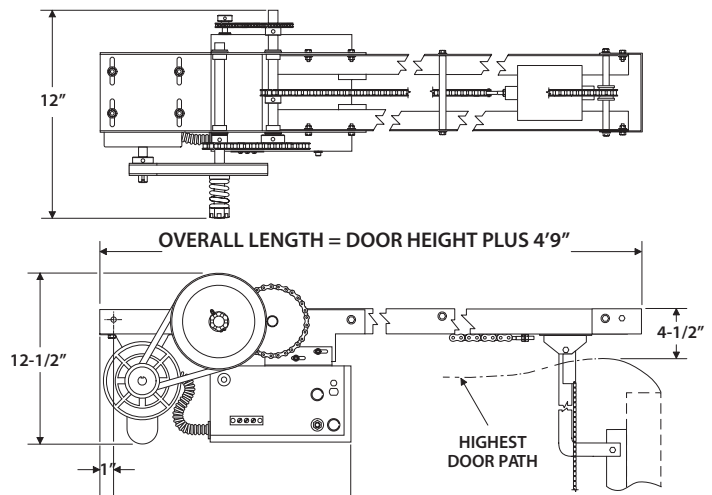
T



PowerMaster Model T Drawbar Operator. Designed for use on standard lift sectional doors.

- High-starting torque motor with full overload protection
- Solid state circuitry with power and program feedback LEDs
- Onboard open/close/stop buttons for service and adjustments
- Auto-detect monitored photo beam
- Drawbar disconnect for manual operation

HORSEPOWER	1/2 - 3/4
POWER OPTIONS	115V, 230V, 460V
BATTERY BACKUP	NO
SHIPPING WEIGHT (APPROX.)	80 LBS (DOES NOT INCLUDE TRACK)



GT

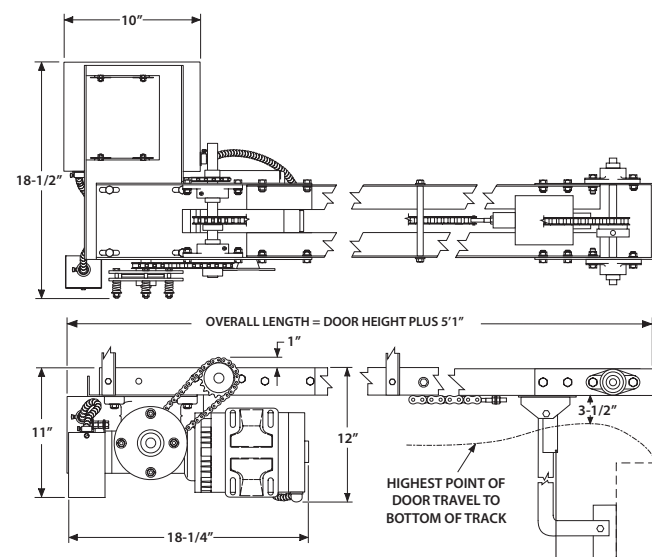


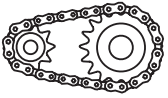
**VARIABLE SPEED
MODIFICATION AVAILABLE**

PowerMaster Model GT Heavy Duty, Gear Reduced Drawbar Operator. Designed for use on standard lift sectional doors.

- High-starting torque motor with full overload protection
- Worm gear reduction and solenoid brake
- Solid state circuitry with power and program feedback LEDs
- Onboard open/close/stop buttons for service and adjustments
- Auto-detect monitored photo beam
- Drawbar disconnect for manual operation

HORSEPOWER	1/2 - 1
POWER OPTIONS	115V, 230V, 460V
BATTERY BACKUP	NO
SHIPPING WEIGHT (APPROX.)	118 LBS (DOES NOT INCLUDE TRACK)





DOOR & GRILLE APPLICATIONS

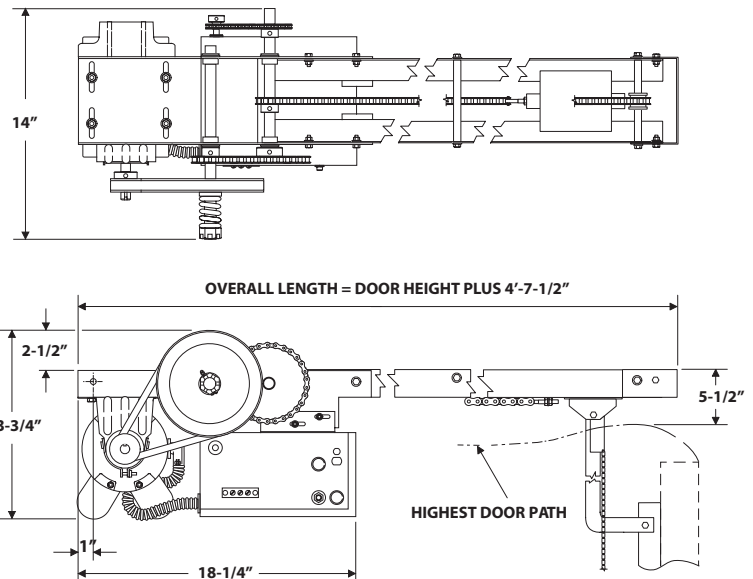
APT



PowerMaster Model APT Apartment House Drawbar Operator. Designed for use on sectional doors requiring high use and quiet operation.

- Resilient mount PSC motor with full overload protection
- Nylon-lined trolley
- Solid state circuitry with power and program feedback LEDs Dual function Timer
- Drawbar disconnect for manual operation
- Remote mountable warning light module with red and green lights (LED recommended)
- Dual Function Timer

HORSEPOWER	1/2
POWER OPTIONS	115V, 1PH
BATTERY BACKUP	NO
SHIPPING WEIGHT (APPROX.)	83 LBS (DOES NOT INCLUDE TRACK)



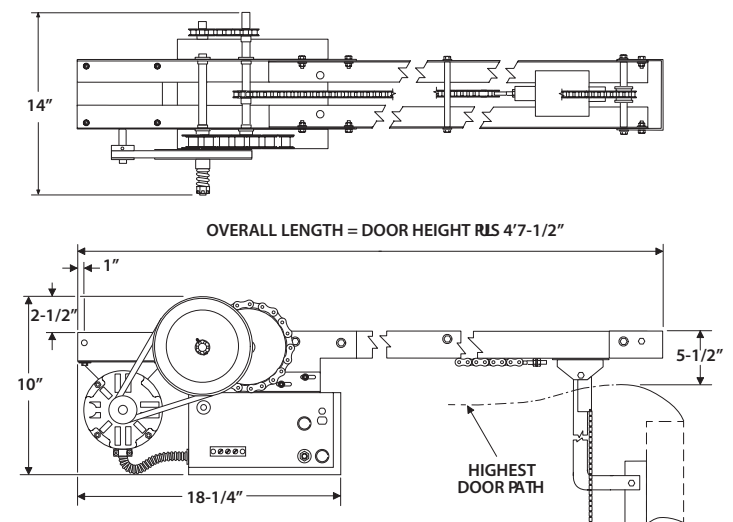
MT

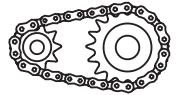


PowerMaster Model MT Medium Duty Drawbar Operator. Designed for use on standard lift sectional doors.

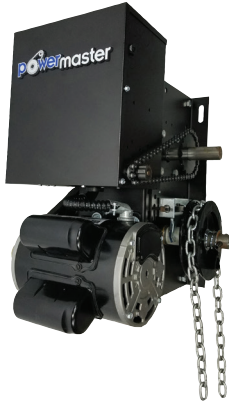
- Resilient mount PSC motor with full overload protection
- Up to 10 cycles per hour
- Solid state circuitry with power and program feedback LEDs
- Onboard open/close/stop buttons for service and adjustments
- Auto-detect monitored photo beam
- Drawbar disconnect for manual operation

HORSEPOWER	1/2
POWER OPTIONS	115V, 1PH
BATTERY BACKUP	NO
SHIPPING WEIGHT (APPROX.)	60 LBS (DOES NOT INCLUDE TRACK)





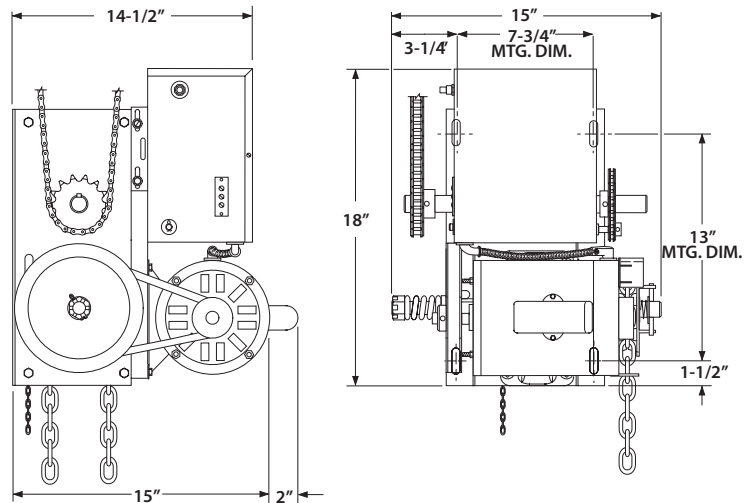
H



PowerMaster Model H V-belt Hoist Operator.
Designed for use on standard lift sectional doors and rolling service doors and grilles.

- High-starting torque motor with full overload protection
- Solid state circuitry with power and program feedback LEDs
- Onboard open/close/stop buttons for service and adjustments
- Auto-detect monitored photo beam
- Floor level disconnect with chain hoist interlock for manual operation

HORSEPOWER	1/2 - 1
POWER OPTIONS	115V, 230V, 460V
BATTERY BACKUP	NO
SHIPPING WEIGHT (APPROX.)	95 LBS



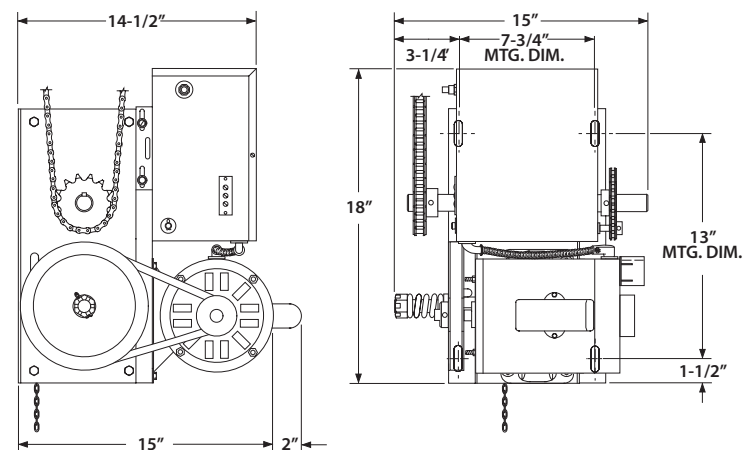
J

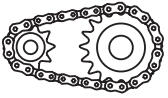


PowerMaster Model J V-belt Jackshaft Operator.
Designed for use on standard lift sectional doors and rolling service doors and grilles.

- High-starting torque motor with full overload protection
- Solid state circuitry with power and program feedback LEDs
- Onboard open/close/stop buttons for service and adjustments
- Auto-detect monitored photo beam
- Floor level disconnect for manual operation

HORSEPOWER	1/2 - 3/4
POWER OPTIONS	115V, 230V, 460V
BATTERY BACKUP	NO
SHIPPING WEIGHT (APPROX.)	85 LBS





DOOR & GRILLE APPLICATIONS

MG



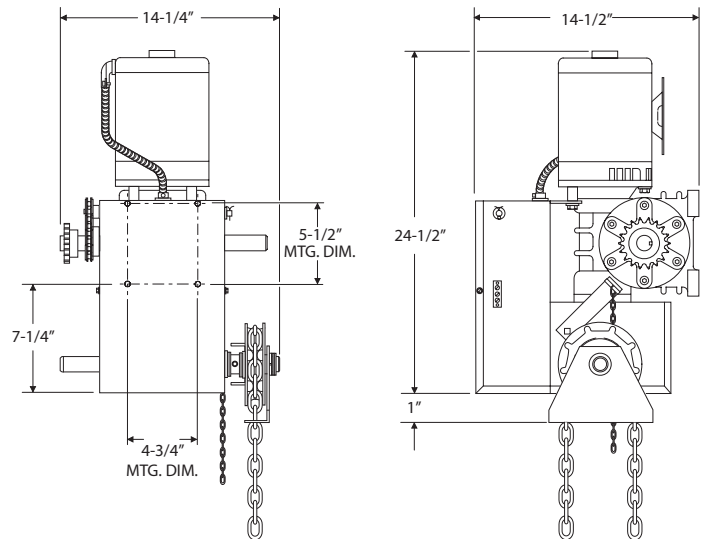
VARIABLE SPEED
MODIFICATION AVAILABLE

PowerMaster Model MG Gear Reduced Hoist Operator. Designed for use on sectional doors with high lift or vertical lift, and rolling service doors or grilles.

- High-starting torque motor with full overload protection
- Solid state circuitry with power and program feedback LEDs
- Onboard open/close/stop buttons for service and adjustments
- Auto-detect monitored photo beam
- Floor level disconnect with chain hoist interlock for manual operation

HORSEPOWER	1/2 - 7.5
POWER OPTIONS	115V, 230V, 460V
BATTERY BACKUP	NO
SHIPPING WEIGHT (APPROX.)	100 LBS*

*Weight varies by horse power of unit.



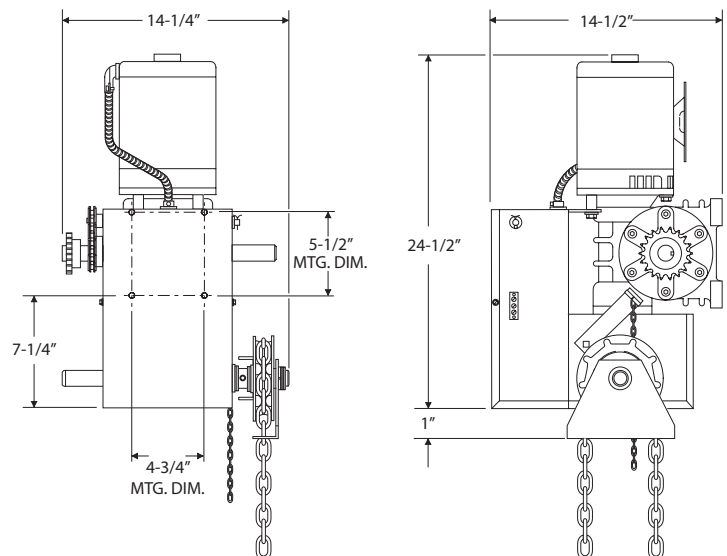
D-MG

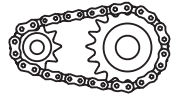


PowerMaster Model D-MG Gearhead Operator with DC motor. Designed for use on sectional doors with high lift or vertical lift, and rolling service doors and grilles.

- Battery Backup
- 576 Watts (1/2 HP equivalent), 24 VDC Motor
- Solid state circuitry with power and program feedback LEDs
- Onboard open/close/stop buttons for service and adjustments
- Floor level disconnect with chain hoist interlock for manual operation

HORSEPOWER	1/2 HP EQUIVALENT
POWER OPTIONS	115V, 1PH
BATTERY BACKUP	YES
SHIPPING WEIGHT (APPROX.)	132 LBS





GJ

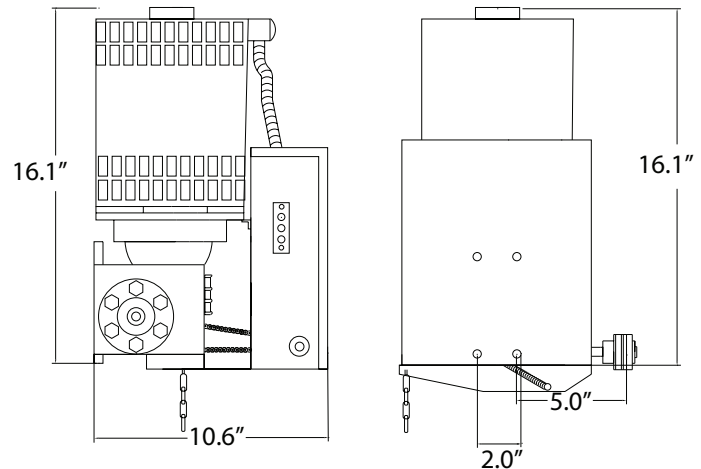


*Optional torque limiting clutch
in lieu of floor disconnect*

PowerMaster Model GJ Gear Reduced Jackshaft Operator. Designed for use on rolling service doors, rolling grilles, and counter shutters.

- High-starting torque motor with full overload protection
- Worm gear reducer
- Solid state circuitry with power and program feedback LEDs
- Onboard open/close/stop buttons for service and adjustments
- Auto-detect monitored photo beam
- Floor level disconnect

HORSEPOWER	1/2
POWER OPTIONS	115V, 230V, 460V
BATTERY BACKUP	NO
SHIPPING WEIGHT (APPROX.)	65 LBS



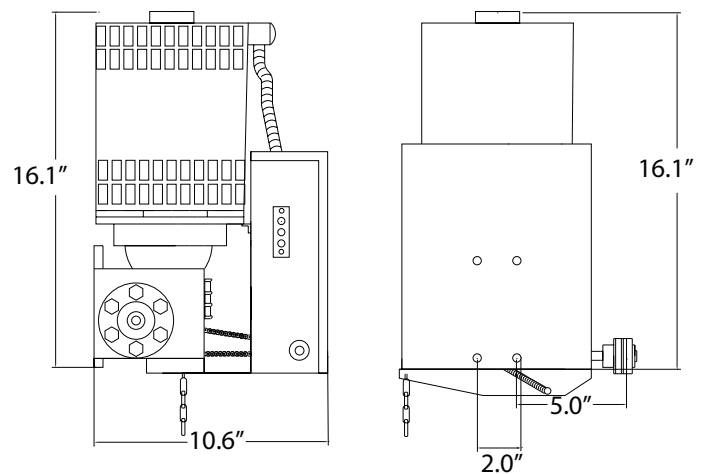
D-GJ

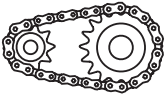


PowerMaster Model D-GJ Gear Reduced Jackshaft Operator with DC motor. Designed for use on rolling service doors, rolling grilles and counter shutters.

- Battery Backup
- 576 Watts (1/2 HP equivalent), 24 VDC Motor
- Continuous duty operation
- Worm gear reducer
- Solid state circuitry with power and program feedback LEDs
- Onboard open/close/stop buttons for service and adjustments
- Floor level disconnect

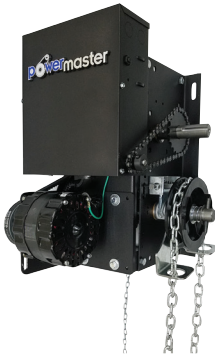
HORSEPOWER	1/2 HP EQUIVALENT
POWER OPTIONS	115V, 1PH
BATTERY BACKUP	YES
SHIPPING WEIGHT (APPROX.)	90 LBS





DOOR & GRILLE APPLICATIONS

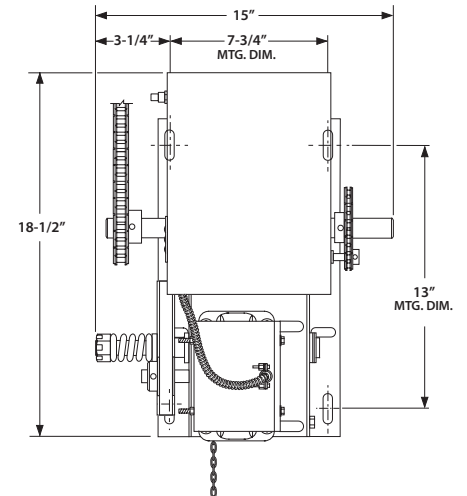
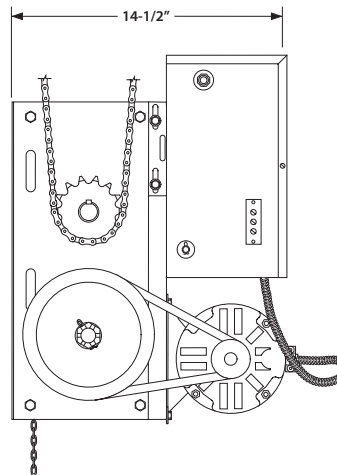
MH



PowerMaster Model MH Medium Duty V-belt Hoist Operator. Designed for use on standard lift sectional doors, rolling service doors and grilles. Limit 10 cycles per hour.

- PSC motor with full overload protection
- Solid state circuitry with power and program feedback LEDs
- Onboard open/close/stop buttons for service and adjustments
- Auto-detect monitored photo beam
- Floor level disconnect with electrical interlock and chain hoist for manual operation

HORSEPOWER	1/2
POWER OPTIONS	115V, 1PH
BATTERY BACKUP	NO
SHIPPING WEIGHT (APPROX.)	85 LBS



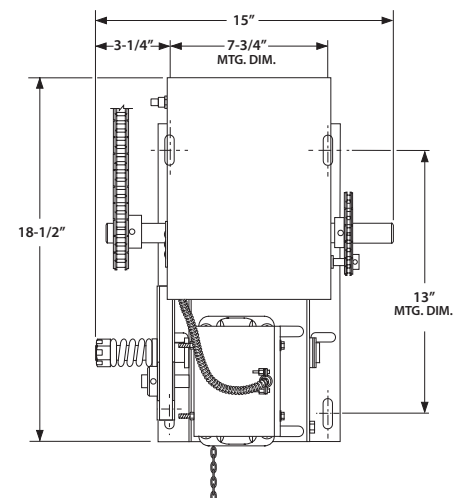
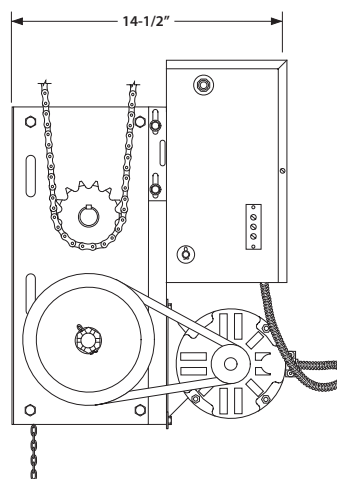
MJ



PowerMaster Model MJ Medium Duty V-belt Jackshaft Operator. Designed for use on standard lift sectional doors, rolling service doors and grilles. Limit 10 cycles per hour.

- PSC motor with full overload protection
- Solid state circuitry with power and program feedback LEDs
- Onboard open/close/stop buttons for service and adjustments
- Auto-detect monitored photo beam
- Floor level disconnect for manual operation

HORSEPOWER	1/2
POWER OPTIONS	115V, 1PH
BATTERY BACKUP	NO
SHIPPING WEIGHT (APPROX.)	78 LBS





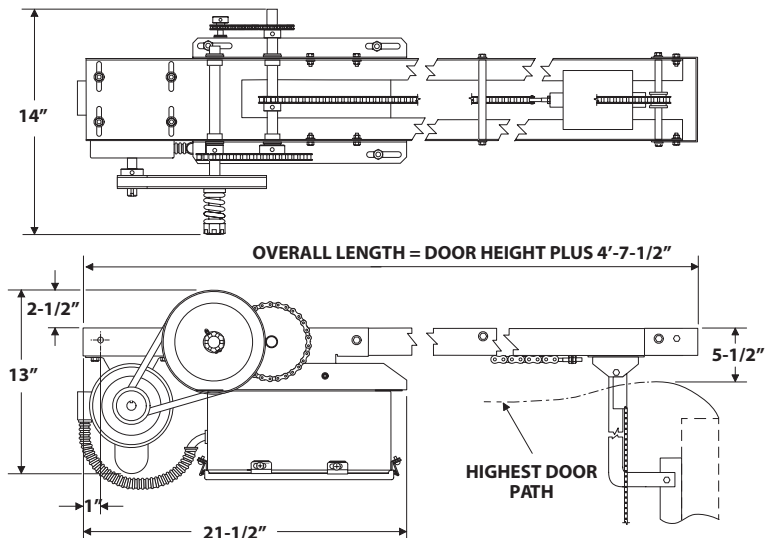
CT



PowerMaster Model CT Carwash Drawbar Operator. Designed for carwash applications for use on standard lift sectional doors.

- High-starting torque TEFC motor with full overload protection (removable without affecting limit switch setting)
- Solid state circuitry with power and program feedback LEDs
- Onboard open/close/stop buttons for service and adjustments
- Auto-detect monitored photo beam for simplified installation
- Drawbar disconnect for manual operation

HORSEPOWER	1/2 - 1
POWER OPTIONS	115V, 230V, 460V
BATTERY BACKUP	NO
SHIPPING WEIGHT (APPROX.)	100 LBS (DOES NOT INCLUDE TRACK)



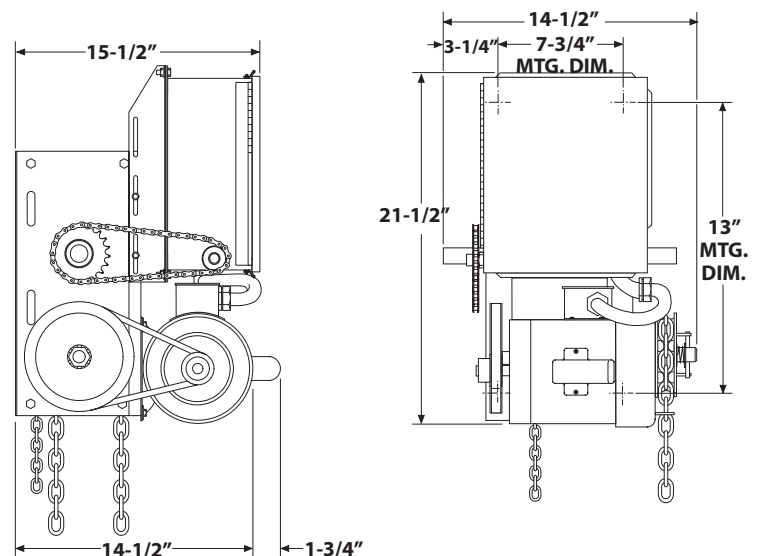
CH

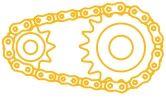


PowerMaster Model CH V-belt Carwash Hoist. Designed for carwash applications for use on standard lift sectional doors, rolling service doors and grilles.

- High-starting torque TEFC motor with full overload protection (removable without affecting limit switch setting)
- Solid state circuitry with power and program feedback LEDs
- Onboard open/close/stop buttons for service and adjustments
- Auto-detect monitored photo beam for simplified installation
- Floor level disconnect with chain hoist assembly for manual operation

HORSEPOWER	1/2 - 1
POWER OPTIONS	115V, 230V, 460V
BATTERY BACKUP	NO
SHIPPING WEIGHT (APPROX.)	111 LBS





NEMA 4 AND NEMA 7 & 9 APPLICATIONS

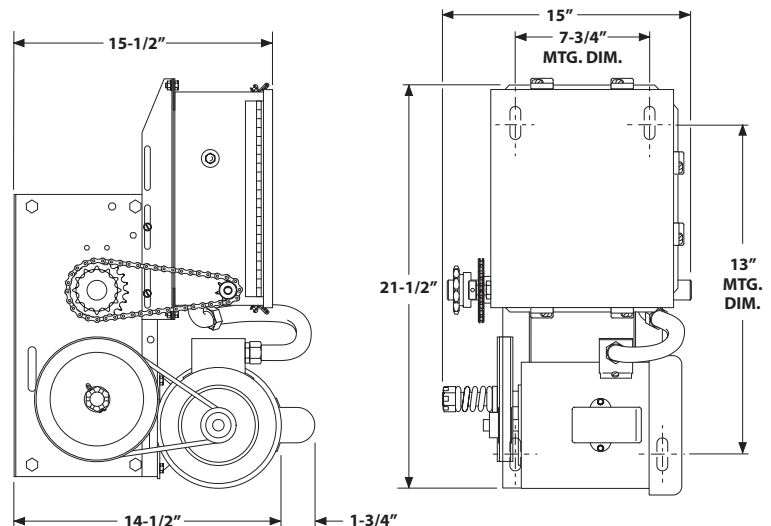
CJ



PowerMaster Model CJ Carwash Jackshaft Operator. Designed for use on carwash applications. Use on standard lift sectional doors, and rolling service doors and grilles.

- High-starting torque TEFC motor with full overload protection (removable without affecting limit switch setting)
- Solid state circuitry with power and program feedback LEDs
- Onboard open/close/stop buttons for service and adjustments
- Auto-detect monitored photo beam
- Floor level disconnect and electrical interlock for manual operation

HORSEPOWER	1/2 - 3/4
POWER OPTIONS	115V, 230V, 460V
BATTERY BACKUP	NO
SHIPPING WEIGHT (APPROX.)	93 LBS



WMG

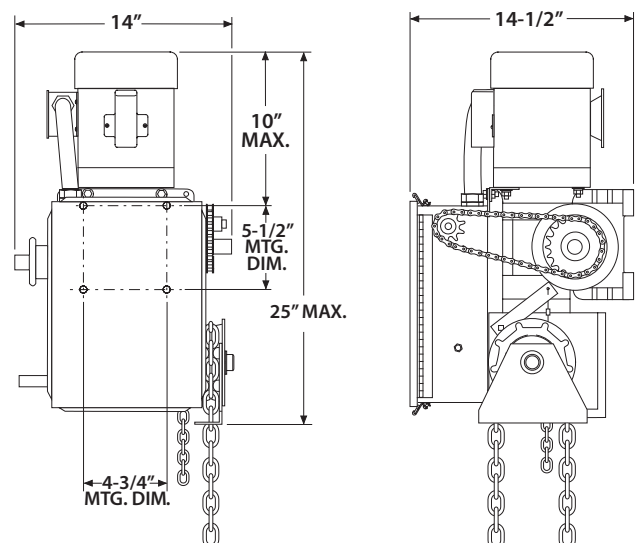


PowerMaster Model WMG Watertight Gear Reduced Hoist Operator. Designed for sectional doors with high lift or vertical lift and rolling service or wet environments.

- High-starting torque TEFC motor with full overload protection
- Solid state circuitry with power and program feedback LEDs
- Onboard open/close/stop buttons for service and adjustments
- Auto-detect monitored photo beam for simplified installation
- Floor level disconnect with chain hoist assembly and electrical interlock for manual operation

HORSEPOWER	1/2 - 5
POWER OPTIONS	115V, 230V, 460V
BATTERY BACKUP	NO
SHIPPING WEIGHT (APPROX.)	140 LBS*

**Weight varies by horse power of unit.*





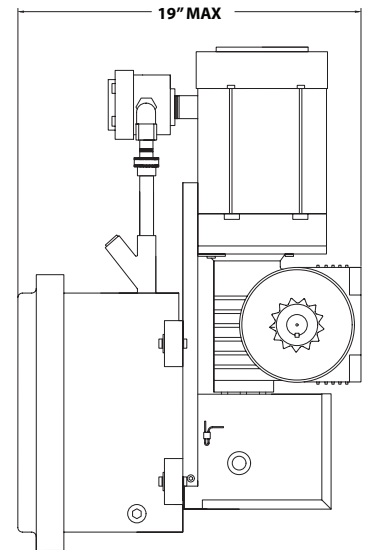
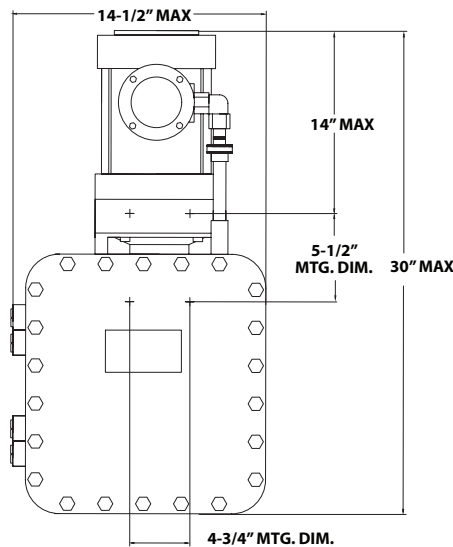
EMG



HORSEPOWER	1/2 - 2
POWER OPTIONS	115V, 230V, 460V
BATTERY BACKUP	NO
SHIPPING WEIGHT (APPROX.)	182 LBS

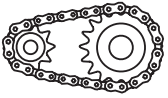
PowerMaster Model EMG Hazardous Duty, Gear Reduced Hoist Operator. Designed for sectional doors with high lift or vertical lift and rolling service doors & grilles in NEMA 7&9 hazardous locations.

- High-starting torque explosion proof motor with full overload protection
- Heavy duty full voltage reversing contactor
- Pre-wired for 3-button station, 1-button station, intrinsically safe automatic reversing equipment
- Floor level disconnect with chain hoist assembly and electrical interlock for manual operation
- Dynamic brake



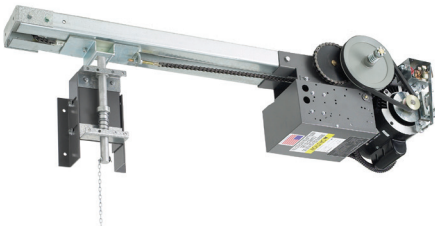
SPECIALS AREN'T SPECIAL IF YOU BUILD THEM ALL THE TIME

Ask us about custom applications such as NEMA 4X, NEMA 12/13, 50Hz, Stainless Steel, and MORE! Custom control panels, additional operational devices, and obstruction sensing equipment are all available. We are your one-stop shop for ALL your traffic and security needs.



SPECIALTY APPLICATIONS

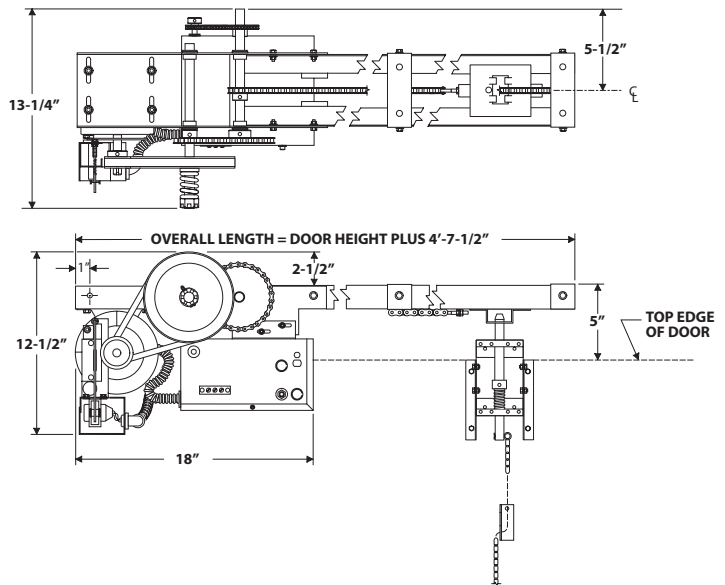
SL



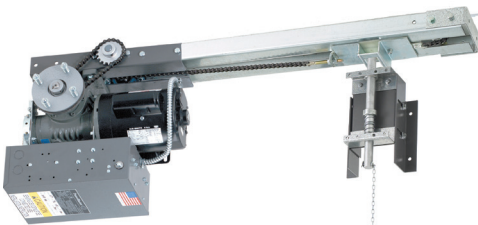
PowerMaster Model SL Slide Door Operator. Designed for use on sliding doors.

- High-starting torque motor with full overload protection
- Solid state circuitry with power and program feedback LEDs
- Onboard open/close/stop buttons for service and adjustments
- Auto-detect monitored photo beam for simplified installation
- Drawbar disconnect for manual operation

HORSEPOWER	1/2 - 1
POWER OPTIONS	115V, 230V, 460V
BATTERY BACKUP	NO
SHIPPING WEIGHT (APPROX.)	120 LBS (DOES NOT INCLUDE TRACK)



GSL

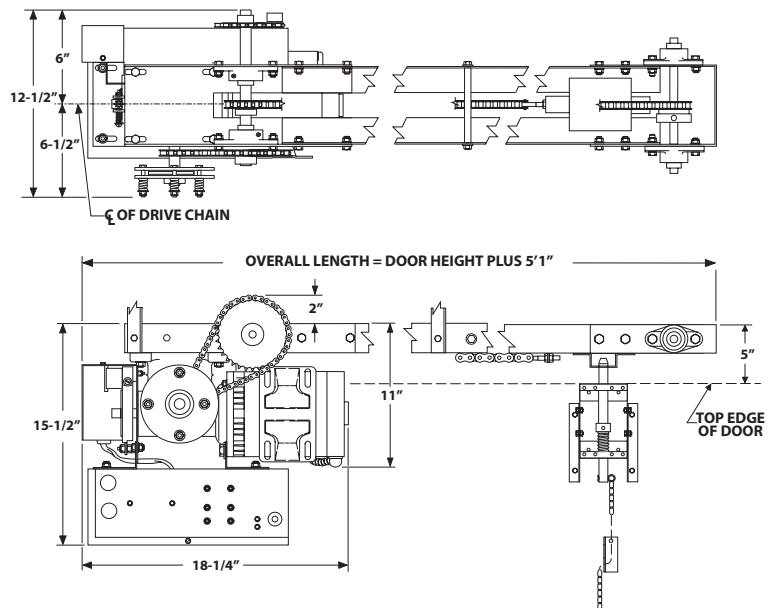


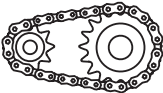
**VARIABLE SPEED
MODIFICATION AVAILABLE**

PowerMaster Model GSL Gear Reduced Slide Door Operator. Designed for use on sliding doors and refrigerator doors.

- High-starting torque motor with full overload protection
- Worm gear reduction & solenoid brake
- Solid state circuitry with power and program feedback LEDs
- Onboard open/close/stop buttons for service and adjustments
- Auto-detect monitored photo beam for simplified installation
- Drawbar disconnect for manual operation

HORSEPOWER	1/2 - 1
POWER OPTIONS	115V, 230V, 460V
BATTERY BACKUP	NO
SHIPPING WEIGHT (APPROX.)	225 LBS (DOES NOT INCLUDE TRACK)





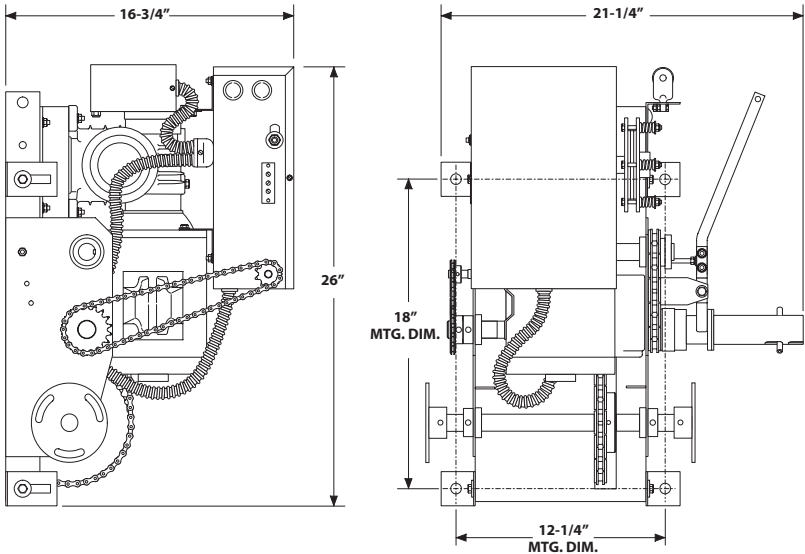
CGH



HORSEPOWER	1/2 - 1
POWER OPTIONS	115V, 230V, 460V
BATTERY BACKUP	NO
SHIPPING WEIGHT (APPROX.)	185 LBS

PowerMaster Model CGH Center Mounted Gear Head Operator. Designed for use on sectional doors requiring high-speed manual operation in the event of power failure.

- High-starting torque motor with full overload protection
- Worm gear reduction and solenoid brake
- Solid state circuitry with power and program feedback LEDs
- Onboard open/close/stop buttons for service and adjustments
- Auto-detect monitored photo beam for simplified installation
- Floor level disconnect and electrical interlock for manual operation



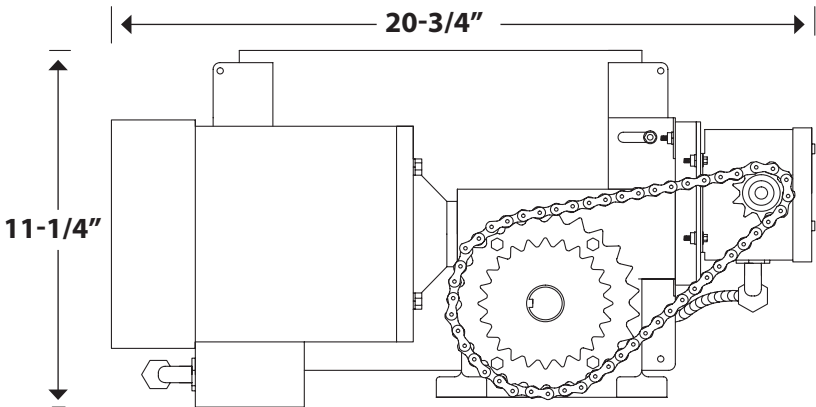
KLT

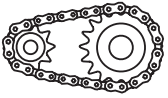


HORSEPOWER	1/2 - 1
POWER OPTIONS	115V, 230V, 460V
BATTERY BACKUP	NO
SHIPPING WEIGHT (APPROX.)	95 LBS

PowerMaster Model KLT Slide Door Operator. Designed for use on refrigerator or freezer door applications.

- High-starting torque motor with full overload protection
- Solid state circuitry with feedback LEDs
- Onboard open/close/stop buttons for service and adjustments
- Field adjustable built-in functions
- Auto-detect monitored photo beam for simplified installation





SPECIALTY APPLICATIONS

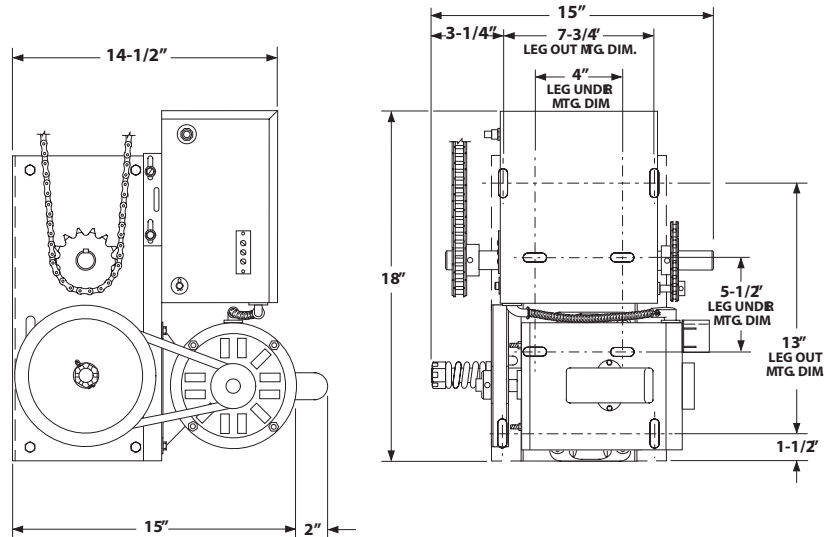
RJ



HORSEPOWER	1/2 - 3/4
POWER OPTIONS	115V, 230V, 460V
BATTERY BACKUP	NO
SHIPPING WEIGHT (APPROX.)	85 LBS

PowerMaster Model RJ V-belt Jackshaft Release Operator. Designed to allow emergency egress capability and lock bar sensing on rolling service doors and grilles.

- High-starting torque motor with full overload protection
- Solid state circuitry with power and program feedback LEDs
- Onboard open/close/stop buttons for service and adjustments
- Auto-detect monitored photo beam for simplified installation
- Floor level disconnect for manual operation
- Includes panic release handle




WE SELL CONTROL STATIONS TOO!

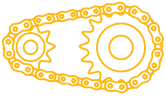


Let PowerMaster be your one source for operators and accessory controls. From standard control stations to fully customized control panels, our production team is ready to service your needs. Our facility is located in the U.S.A., and can offer a quick turnaround time for most of your requirements!

SEE OUR LIST OF CONTROL STATIONS STARTING ON PAGE 28

GATE SIZE AND WEIGHT TABLE

					
SLIDE GATE OPERATORS					
MODEL#	ITEM#	CYCLES PER HR	VOLTAGE & PHASE	MAX GATE WEIGHT	MAX LEAF WIDTH
RSG	11-71004	10	115V, 1 PH	350#	14'
D-CSG	15-12004	25		1200#	30'
SG	15-71004	30	115V, 1 PH	1500#	50'
D-SG	15-72004	60		2000#	50'
SIG	19-71004	45	115V, 1 PH	2000#	80'
SWING GATE OPERATORS					
MODEL#	ITEM#	CYCLES PER HR	VOLTAGE & PHASE	MAX GATE WEIGHT	MAX LEAF WIDTH
ASW	12-71001	50		800#	15'
MSW	12-71000	24	115V, 1 PH	800#	16'
DSW	13-12000	60		2000#	18'
CSWI	20-71000	45	115V, 1 PH	1800#	30'
DSWI	20-21001	60		2000#	30'
BARRIER GATE OPERATORS					
MODEL#	ITEM#	CYCLES PER HR		MAX ARM LENGTH	
D-SBG	17-12000	Continuous		16'	
D-WBG	18-12051	Continuous		24'	



SLIDE GATE OPERATORS

The PowerMaster Commercial Gate Operator line includes solutions for swing, slide, and traffic barrier applications. These operators are all UL 325 listed for use in Class I through Class IV applications.

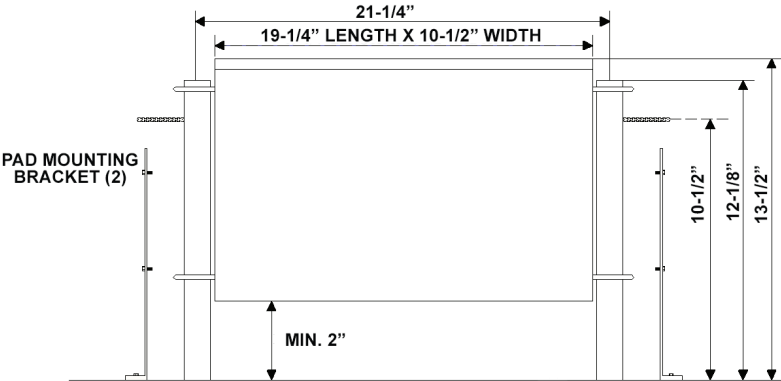
RSG



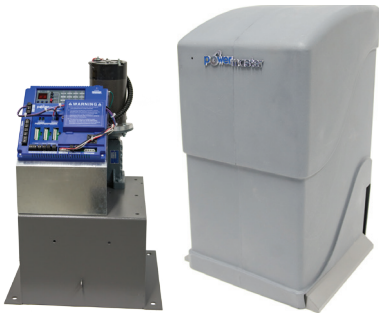
PowerMaster Model RSG Slide Gate Operator. Designed for use in Residential, Commercial, Industrial and Restricted Access applications.

- PSC motor
- Timer to Close
- Master/Slave Operation
- Left/Right changeover in field
- NEMA 1 one-button control station

HORSEPOWER	1/2	MAX GATE WIDTH	14 FT
POWER OPTIONS	115V, 1PH	MAX CYCLES	10 CPH
BATTERY BACKUP	NO	TRAVEL SPEED	12 INCHES/SEC.
MAX GATE WEIGHT	350 LBS	SHIPPING WEIGHT (APPROX.)	90 LBS



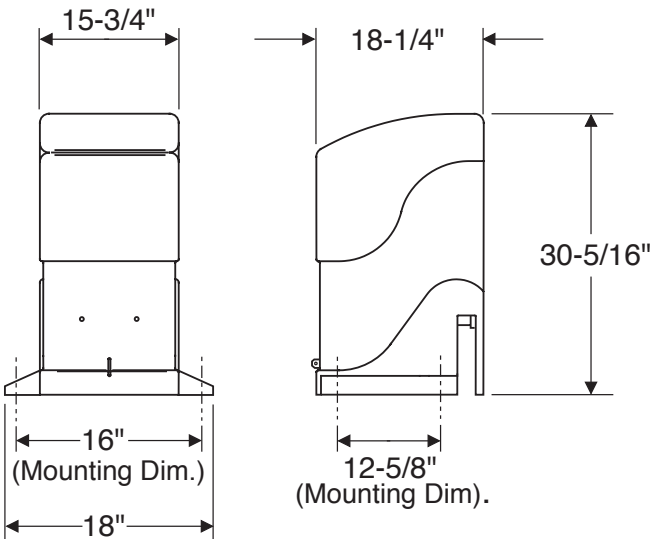
CSG



PowerMaster Model CSG Vehicular Slide Gate Operator. For high traffic applications. Ideal for custom homes, apartments, self storage and other commercial properties. Available in AC or DC.

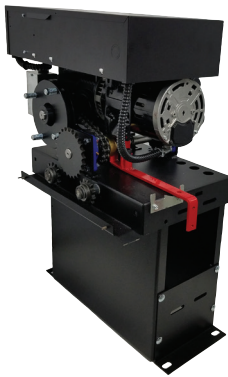
- Battery Backup in DC version
- 1/2 HP motor
- Soft start/Soft stop
- Easy set limits
- Left/Right changeover in field
- AC power outlets
- Accepts plug-in loop detectors
- Pad mountable

HORSEPOWER	1/2	MAX GATE WIDTH	40 FT
POWER OPTIONS	115V, 1PH	MAX CYCLES	60 CPH
BATTERY BACKUP	OPTIONAL	TRAVEL SPEED	11 INCHES/SEC.
MAX GATE WEIGHT	1500 LBS	SHIPPING WEIGHT (APPROX.)	150 LBS



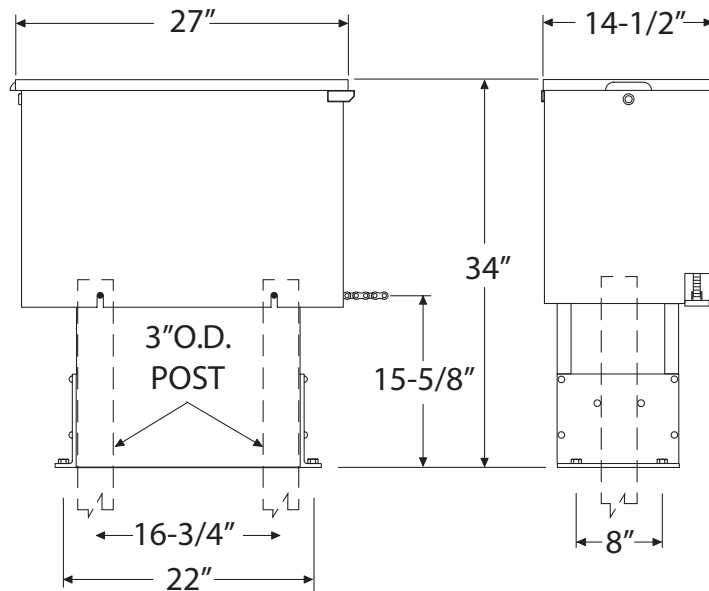


SG & D-SG

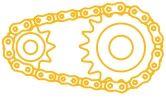


PowerMaster Model SG is available in 1Ø or 3Ø configuration. The **D-SG Model** is available in a 115v 1Ø configuration only. The D-SG uses a DC motor with battery backup, soft start/soft stop, and an AC power outlet.

Both versions of this unit feature an onboard three button control station, timer to close, and an easy left/right changeover in the field. They also have a padlockable drive disconnect with brass slide for manual operation in case of power failure. The SG and D-SG are post or pad-mountable for easy installation.



	SG	D-SG
HORSEPOWER	1/2 TO 1.5	576 WATTS (1/2HP EQUIVALENT)
POWER OPTIONS	115V, 230V, 460V	115V, 1Ø
BATTERY BACKUP	NO	YES
MAX GATE WEIGHT	1500 LBS	2000 LBS
MAX GATE WIDTH	50 FT	50 FT
MAX CYCLES	30 CPH	60 CPH
TRAVEL SPEED	9 INCHES/SEC.	9 INCHES/SEC.
SHIPPING WEIGHT (APPROX)	235 (WITH PLATFORM)	245 (WITH PLATFORM)



SLIDE GATE OPERATORS

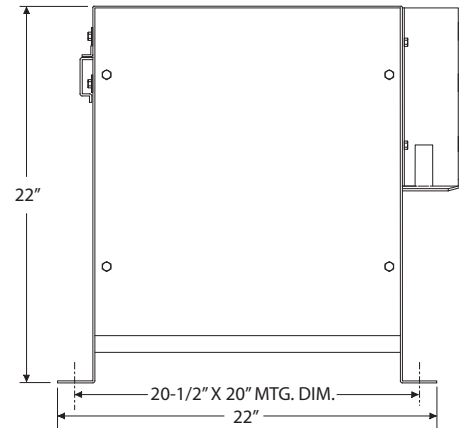
SGI



HORSEPOWER	1/2 - 2	MAX GATE WIDTH	80 FT
POWER OPTIONS	115V, 230V, 460V	MAX CYCLES	45 CPH
BATTERY BACKUP	NO	TRAVEL SPEED	9 INCHES/SEC.
MAX GATE WEIGHT	2000 LBS	SHIPPING WEIGHT (APPROX.)	360 LBS

PowerMaster Model SGI Slide Gate Operator. Designed for use in Commercial, Industrial and Restricted Access applications.

- Timer to Close
- Master/Slave operation
- Left/Right changeover in field
- Padlockable drive disconnect for manual operation
- Pad mountable for a strong, solid installation
- Optional 18" riser



SAFETY FIRST!



PowerMaster carries a full line of safety and convenience products for your application. In addition to required photo eyes and beams, we can supply any of the following from our stock:

- WARNING LIGHTS
- WARNING HORNS
- ROTATING BEACONS
- CAR SENSING PROBES
- LOOP DETECTORS
- KEYPADS
- PROXIMITY READERS
- ADA-COMPLIANT BUZZERS AND STROBES



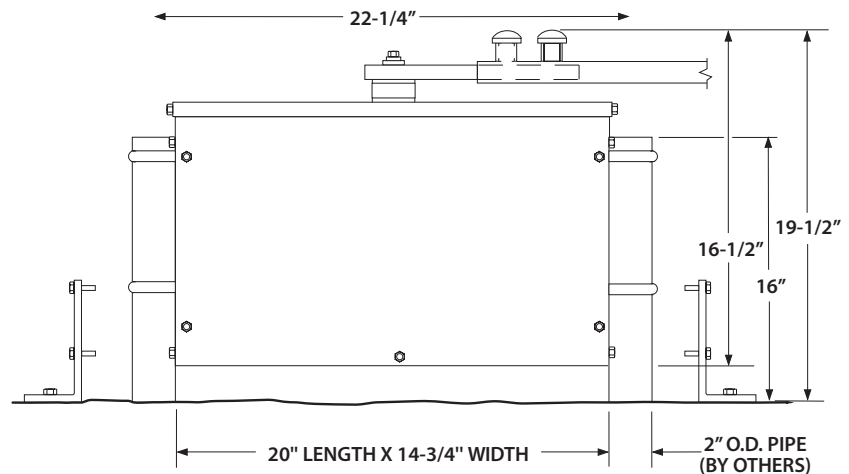
MSW



HORSEPOWER	1/2	MAX GATE WIDTH	16 FT
POWER OPTIONS	115V	MAX CYCLES	24 CPH
BATTERY BACKUP	NO	TRAVEL SPEED	12 SEC. TO OPEN/CLOSE
MAX GATE WEIGHT	800 LBS	SHIPPING WEIGHT (APPROX.)	103 LBS

PowerMaster Model MSW Swing Gate Operator. Designed for use on industrial vehicular swinging gates.

- PSC motor
- Timer to Close
- Master/Slave Operation
- Left/Right changeover in field
- NEMA 1 three-button control station
- Drive arm disconnects for manual operation



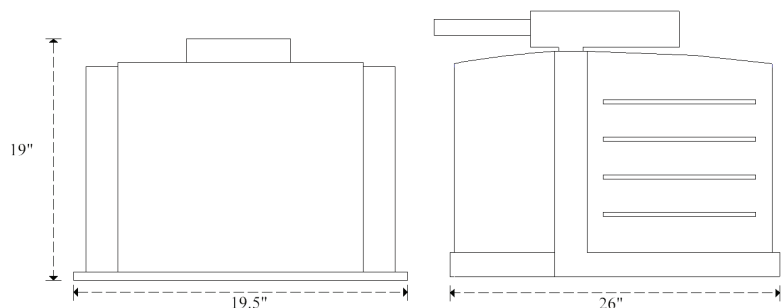
D-SW

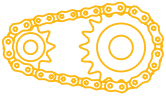


HORSEPOWER	1/2 HP EQUIV.	MAX GATE WIDTH	18 FT
POWER OPTIONS	115V	MAX CYCLES	60 CPH
BATTERY BACKUP	YES	TRAVEL SPEED	90° IN 15 SEC.
MAX GATE WEIGHT	2000 LBS	SHIPPING WEIGHT (APPROX.)	160 LBS

PowerMaster Model D-SW Swing Gate Operator with DC motor. Designed for use in high traffic areas.

- Battery Backup
- 576 Watts (1/2 HP equivalent), 24 VDC Motor
- Soft start/Soft stop
- Easy set limits
- AC Power outlets
- Accepts plug-in loop detectors
- Arm attachment height is 17 inches from operator base





Swing Gate Operators

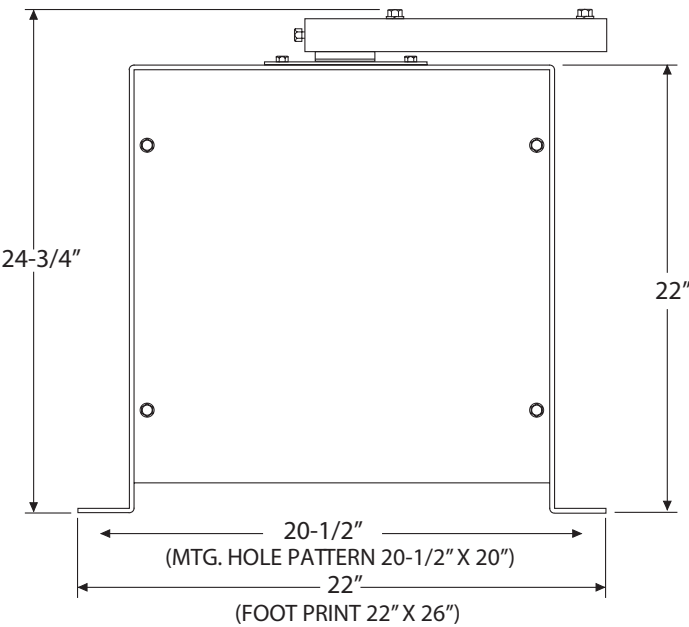
CSWI & D-SWI



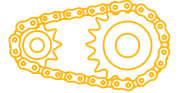
OPTIONAL RISER
AVAILABLE

PowerMaster Models CSWI and D-SWI are industrial swing gate operators designed for use in high traffic applications. The CSWI is available in 1Ø or 3Ø configuration. The D-SWI Swing Gate Operator with DC motor is available in a 115v 1Ø configuration only. Standard features include a battery backup, soft start/soft stop, and an AC power outlet.

Both versions of this unit have a timer to close, Master/Slave option, and left/right changeover in the field. The drive arm is also easily disconnected for manual operation.



	CSWI	D-SWI
HORSEPOWER	1/2 TO 2	576 WATTS (1/2HP EQUIVALENT)
POWER OPTIONS	115V, 230V, 460V	115V, 1Ø
BATTERY BACKUP	NO	YES
MAX GATE WEIGHT	1800 LBS	2000 LBS
MAX GATE WIDTH	30 FT	30 FT
MAX CYCLES	45 CPH	60 CPH
TRAVEL SPEED	18 SECONDS TO OPEN/CLOSE	18 SECONDS TO OPEN/CLOSE
SHIPPING WEIGHT (APPROX)	350 (WITH PALLET)	350 (WITH PALLET)



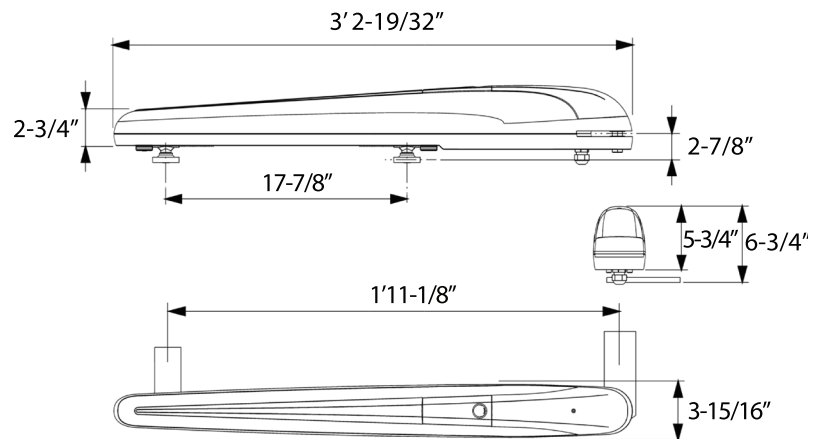
ASW



HORSEPOWER	1/2 HP EQUIV.	MAX GATE WIDTH	15FT
POWER OPTIONS	115V	MAX CYCLES	45 CPH
BATTERY BACKUP	YES	TRAVEL SPEED	15 SEC. TO OPEN/CLOSE
MAX GATE WEIGHT	800 LBS	SHIPPING WEIGHT (APPROX.)	75 LBS

PowerMaster Model ASW Swing Gate Operator with DC motor. Controls vehicular gates in moderate traffic and residential applications. Ideal for custom homes, self storage, and other commercial properties.

- Battery Backup - Up to 600 cycles on fully charged batteries when AC power is out
- 576 Watts (1/2 HP equivalent), 24 VDC Motor
- Soft start/Soft stop
- Single or Dual gate mode
- AC Power outlets
- Accepts plug-in loop detectors



NEW!



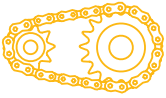
POWERMASTER 1-BUTTON & 2-BUTTON TRANSMITTERS

- Rolling Code Transmitters
- Self-Learning Remote Technology

Working voltage: 12-24 VAC/DC

Temperature range: -20°C to 60°C

Working frequency: 433.92 MHz



BARRIER GATE OPERATORS

D-SBG



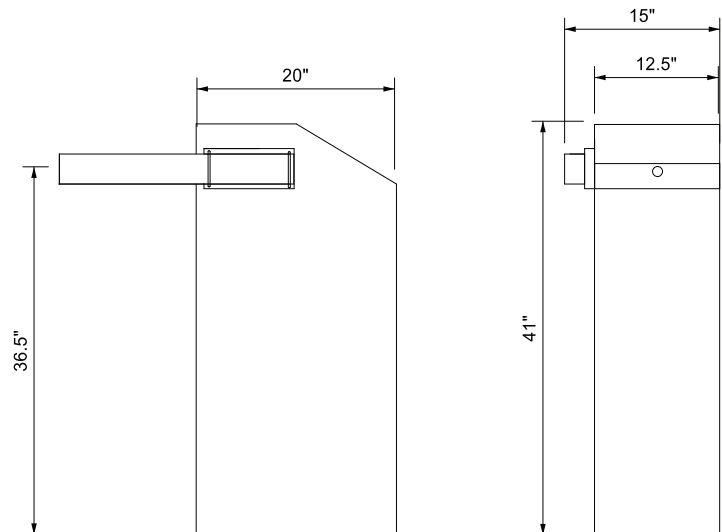
**LIGHTED ARM OPTION
AVAILABLE**

PowerMaster Model D-SBG Single Arm Barrier Gate Operator with DC motor.

- Battery Backup - Up to 200 cycles on fully charged batteries when AC power is out
- 576 Watts (1/2 HP equivalent), 24 VDC Motor
- Continuous duty operation
- Low battery shut down position selection (open/close)
- Accepts plug-in loop detectors

HORSEPOWER	1/2 HP EQUIV.	MAX CYCLES	100 CPH
POWER OPTIONS	115V	TRAVEL SPEED (APPROX.)	90° IN 4 SEC.
BATTERY BACKUP	YES	SHIPPING WEIGHT (APPROX.)	250 LBS*
MAX ARM LENGTH	16 FT		

**Weight may vary based on arm length.*



D-WBG

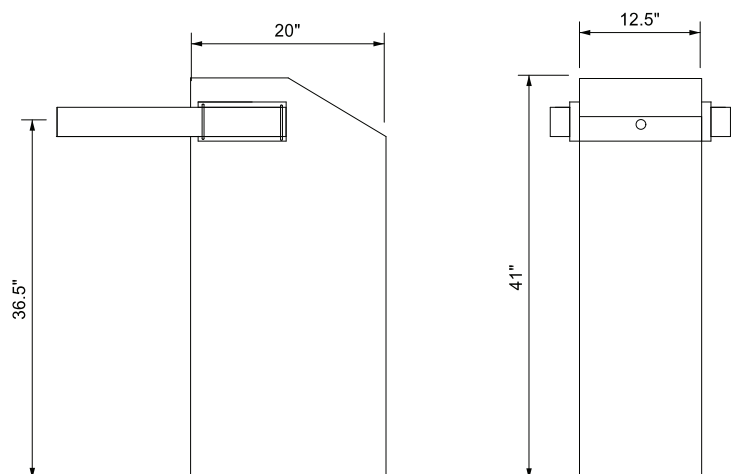


PowerMaster Model D-WBG Wishbone Arm Barrier Gate Operator with DC motor.

- Battery Backup - Up to 200 cycles on fully charged batteries when AC power is out
- 576 Watts (1/2 HP equivalent), 24 VDC Motor
- Continuous duty operation
- Low battery shut down position selection (open/close)
- Accepts plug-in loop detectors

HORSEPOWER	1/2 HP EQUIV.	MAX CYCLES	25 CPH
POWER OPTIONS	115V	TRAVEL SPEED (APPROX.)	90° IN 7 SEC.
BATTERY BACKUP	YES	SHIPPING WEIGHT (APPROX.)	400 LBS*
MAX ARM LENGTH	24 FT		

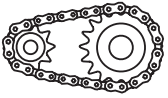
**Weight may vary based on arm length.*





WEIGHT RESOURCE GUIDE

Door Operators			Gate Operators		
MODEL	(COMMENTS)	WEIGHT	MODEL	(COMMENTS)	WEIGHT
GJ		50	MSW		103
MG (to 1HP)		111	DSW		160
MG (to 2 HP)		141	CSWI / D-SWI		315
MG (3HP)		254	ASW W/BATTERY BOX		55
MG (5HP)		600	RSG		90
MG (7HP)		700	D-CSG		150
WMG		150	SG		205
EMG		145	SG PLATFORM		31
H		90	SGI		360
J		78	D-SG		205
MH		75	D-SBG		215
MJ		68	D-WBG		215
CH		111	Note: This is <i>raw weight</i> of unit. Please see operator descriptions for shipping weight.		
CJ		93			
T		75			
MT		52			
CT		95			
APT		83	ARM, WOOD, SBG		30
SL		112	ARM, ALUM 12' FOR SBG		30
GSL		200	ARM, TUBE 12' OR 16' FOR SBG		16
CGH		150	ARM, WOOD FOR WBG		50
GT		113	WEIGHT: SINGLE		21
WGT		150	WEIGHT: DOUBLE		42
EGT		157			
TRACK & CHAIN GUIDE					
Length / Pitches			Weight (lbs)		
Door Height (ft)	Chain Length (ft)	# of Pitches	Track	#65 chain	#41 chain
8	23	555	40	4.50	5.75
10	27	651	45	5.25	7.00
12	31	747	51	6.00	8.25
14	35	843	58	6.75	9.50
16	39	939	65	7.50	10.75
18	43	1035	71	8.25	12.00
20	47	1131	78	9.00	13.25
22	51	1227	85	9.75	
24	55	1323	102	10.50	
26	59	1419	120	11.25	



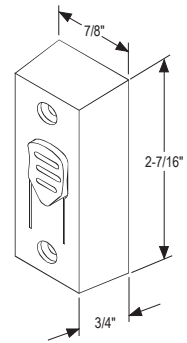
NEMA 1 CONTROLS

1R



1 N.O. Momentary Contact
Plastic Housing

H - 2.44" W - 0.87" D - 0.75"

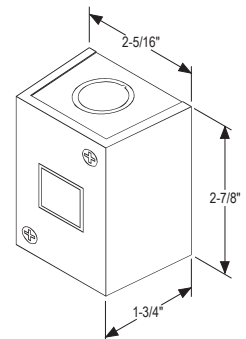


1B



1 N.O. Momentary Contact
Sheet Metal Housing

H - 2.87" W - 2.31" D - 1.75"

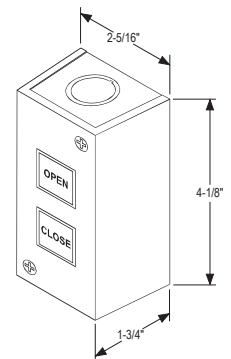


2B



OPEN (N.O.) - CLOSE (N.O.)
Momentary Contact
Sheet Metal Housing

H - 4.13" W - 2.31" D - 1.75"



3B/3BU



3B

OPEN (N.O.) - CLOSE (N.O.) - STOP (N.C.)

Momentary Contact
Sheet Metal Housing

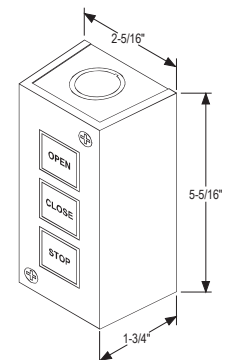
H - 5.31" W - 2.31" D - 1.75"

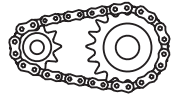
3BU

OPEN (N.O.) - CLOSE (N.O.) - STOP (N.O. + N.C.)

Momentary Contact
Sheet Metal Housing

H - 5.31" W - 2.31" D - 1.75"

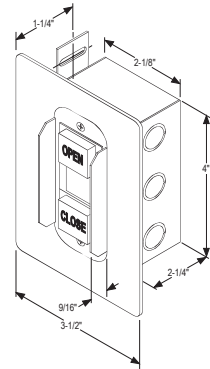




2BF



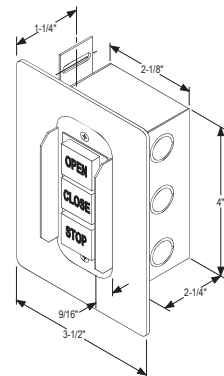
OPEN (N.O.) - CLOSE (N.O.)
Momentary Contact
Aluminum Faceplate
Steel Back Box



3BF



OPEN (N.O.) - CLOSE (N.O.) - STOP (N.C.)
Momentary Contact
Aluminum Faceplate
Steel Back Box

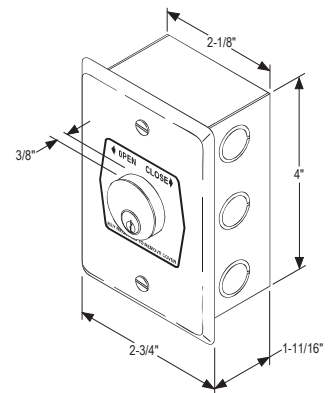


HBF



Keyed OPEN (N.O.) - CLOSE (N.O.)
Momentary Contact
Center Return

Stainless Steel Faceplate: H - 4.5" x W - 2.75"
Steel Back Box: H - 4.0" W - 2.12" D - 2.75"

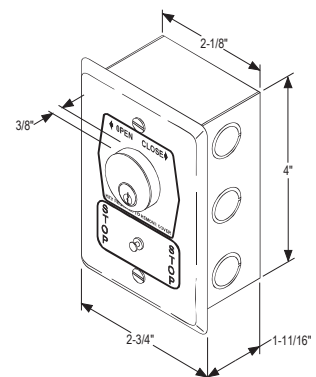


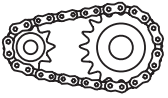
HBFS



Keyed OPEN (N.O.) - CLOSE (N.O.)
Stop Button (N.C.)
Momentary Contact
Center Return

Stainless Steel Faceplate: H - 4.5" x W - 2.75"
Steel Back Box: H - 4.0" W - 2.12" D - 2.75"





NEMA 1 CONTROLS

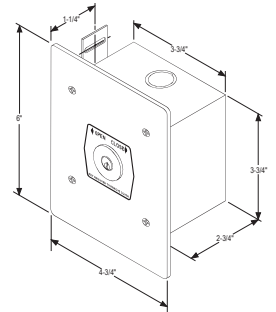
1KF



Keyed OPEN (N.O.) - CLOSE (N.O.)
Momentary Contact, Center Return
Yale Keyway Mortise Cylinder Standard

Aluminum Faceplate: H - 6"W - 4.75"
Steel Back Box: H - 3.75"W - 3.75" D - 2.75"

Specify Single, Keyed alike or Keyed in pairs.

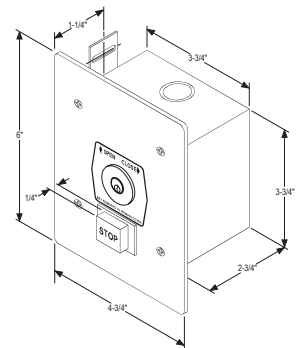


1KFS



Keyed OPEN (N.O.) - CLOSE (N.O.)
Stop Button (N.C.)
Momentary Contact
Center Return
Yale Keyway Mortise Cylinder Standard
Aluminum Faceplate: H - 6"W - 4.75"
Steel Back Box: H - 3.75"W - 3.75" D - 2.75"

Specify Single, Keyed alike or Keyed in pairs.

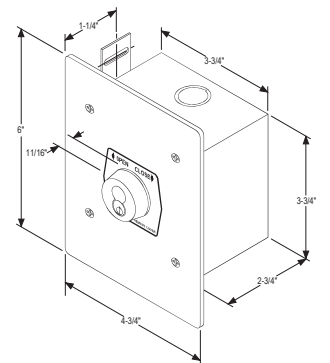


1KF-IC



Keyed OPEN (N.O.) - CLOSE (N.O.)
Momentary Contact,
Center Return Interchangeable Core
Mortise Cylinder. Accepts 7 Pin Best Core.
Also available w/STOP button (1KFS-IC)

Aluminum Faceplate: H - 6"W - 4.75"
Steel Back Box: H - 3.75"W - 3.75" D - 2.75"



INTERLOCK SWITCH / MID-STOP

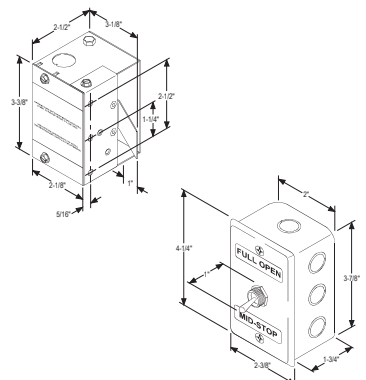


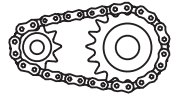
Interlock Switch

IS-1 for Pass Door
IS-2 for Sectional Door
IS-3 for Rolling Steel Door or Grille
H - 3.37"W - 2.13"D - 2.50"

Mid-Stop Switch

Use to stop door partially open or full open.
Steel Faceplate: H - 4.25"W - 2.38"
Steel Black Box: H - 3.87"W - 2.00" D - 1.75"





3BFX/3BFXL



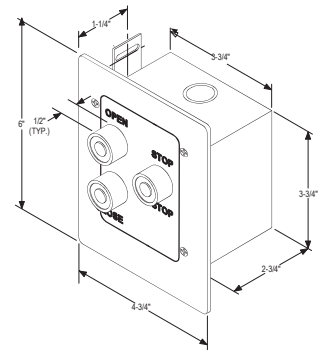
3BFX

OPEN (N.O.) - CLOSE (N.O.) - STOP (N.C.)
Momentary Contact

3BFXL

OPEN (N.O.) - CLOSE (N.O.) - STOP (N.C.)
w/Keyed Lockout Momentary Contact Buttons
Maintained Contact ON-OFF Cylinder (not shown)

Aluminum Faceplate H - 6.00" W - 4.75"



CP-1 / CP-2

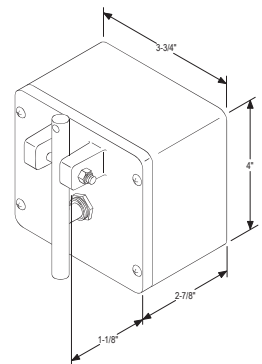


CP-1 - Exterior Ceiling Pull Switch

SPST Momentary Contact
Aluminum Enclosure
H - 4.00" W 3.75" D - 2.87"

CP-2 - Exterior Ceiling Pull Switch

DPST Momentary Contact
Aluminum Enclosure
H - 4.00" W - 3.75" D - 2.87"



1KFX / 1KFXS



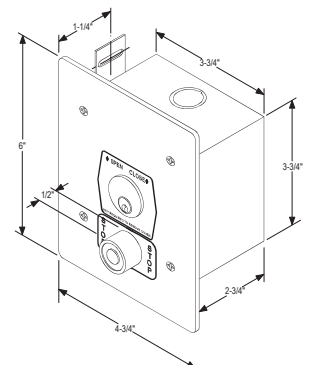
Keyed OPEN (N.O.) - CLOSE (N.O.)
STOP Button (N.C.)

Momentary Contact

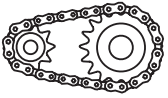
Center Return Yale Keyway Mortise Cylinder Std
(Also available w/o Stop as 1KFX)

Aluminum Faceplate: H-6" W - 4.75"
Steel Black Box: H - 3.75" W - 3.75" D - 2.75"

Specify Single, Keyed alike or Keyed in pairs.



We offer a full line of access controls, telephone entry systems, intercom systems, loop detectors, motion sensors and safety devices for every installation. We will build your combination reversing starters and fused disconnect switches in any NEMA configuration, and specialize in custom control panels that are delivered quickly.



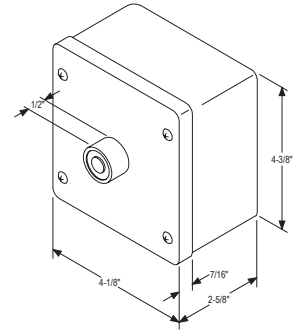
NEMA 4 CONTROLS

1BX



Epoxy Powder Coated
Aluminum Enclosure
Single Button (N.O.)
Momentary Contact Standard

H - 4.37" W - 4.12" D - 2.62"

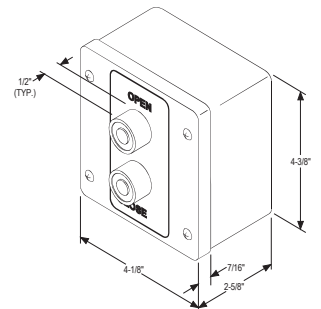


2BX



Epoxy Powder Coated
Aluminum Enclosure
OPEN (N.O.) - CLOSE (N.O.)
Momentary Contact

H - 4.37" W - 4.12" D - 2.62"

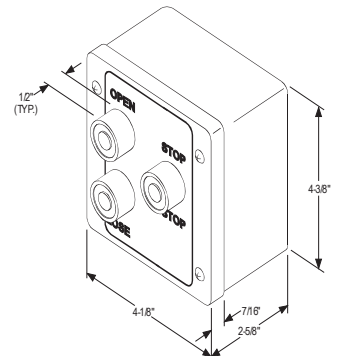


3BX



Epoxy Powder Coated
Aluminum Enclosure
OPEN (N.O.) - CLOSE (N.O.) - STOP (N.C.)
Momentary Contact

H - 4.37" W - 4.12" D - 2.62"

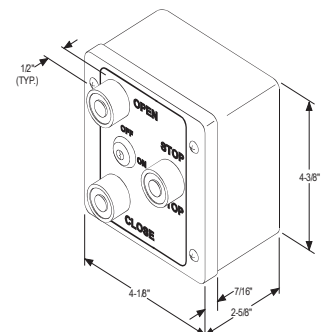


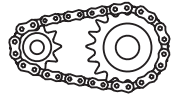
3BXL



Epoxy Powder Coated
Aluminum Enclosure
OPEN (N.O.) - CLOSE (N.O.) - STOP (N.C.)
Momentary Contact
ON-OFF Cylinder Maintained Contact

H - 4.37" W - 4.12" D - 2.62"



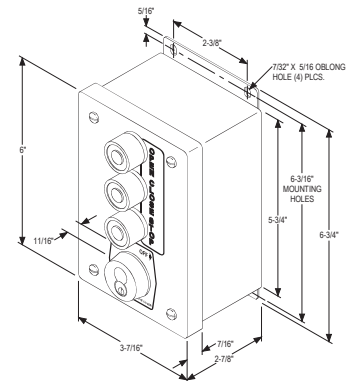


3BLM



Epoxy Powder Coated Steel Enclosure
OPEN (N.O.) - CLOSE (N.O.) - STOP (N.C.)
Momentary Contact
ON-OFF Mortise Cylinder Center Return

Available with standard Yale Keyway
or Interchangeable Core Cylinder as shown.

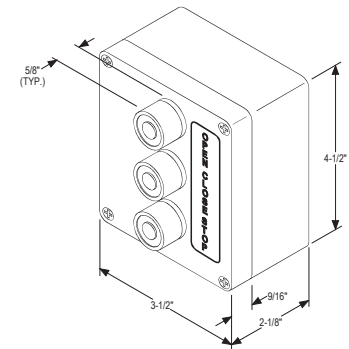


3B4X



NEMA 4X
OPEN (NO) - CLOSE (N.O.) - STOP (N.C.)
Momentary Contact
Grey Polycarbonate Enclosure

H - 4.50" W - 3.50" D - 2.12"

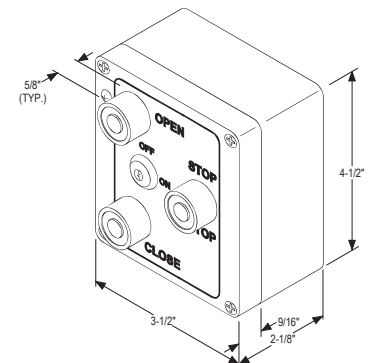


3B4XL



NEMA 4X
OPEN (N.O.) - CLOSE (N.O.) - STOP (N.C.)
Momentary Contact
ON-OFF Cylinder Maintained Contact
Grey Polycarbonate Enclosure

H - 4.50" W - 3.50" D - 2.12"



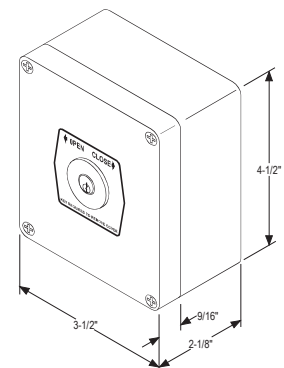
1K4X / 1K4XS

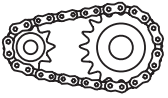


OPEN (N.O.) - CLOSE (N.O.)
Momentary Contact spring return to center
Grey Polycarbonate Enclosure

H - 4.50" W - 3.50" D - 2.12"

Available w/ STOP (1K4XS)





NEMA 4 CONTROLS

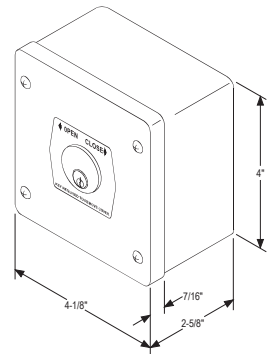
1KX



Keyed OPEN (N.O.) - CLOSE (N.O.)
Momentary Contact, Center Return
Yale Keyway Mortise Cylinder Standard
Epoxy Powder Coated Aluminum Enclosure

H - 4.37" W- 4.12" D - 2.62"

Specify Single, Keyed alike or Keyed in pairs.



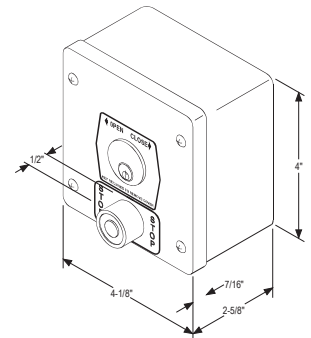
1KXS



Keyed OPEN (N.O.) - CLOSE (N.O.)
Momentary Contact, Center Return
Yale Keyway Mortise Cylinder Standard
Stop Button (N.C.) Momentary Contact
Epoxy Powder Coated Aluminum Enclosure

H - 4.37" W- 4.12" D - 2.62"

Specify Single, Keyed alike or Keyed in pairs.

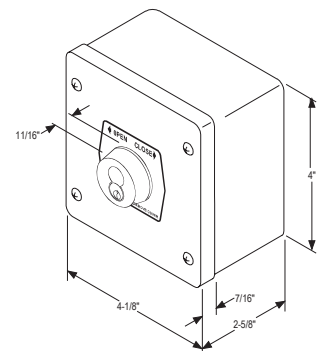


1KX-IC



Keyed OPEN (N.O.) - CLOSE (N.O.)
Momentary Contact, Center Return
Interchangeable Core Mortise Cylinder
Accepts 7 Pin Best Core.
Epoxy Powder Coated Aluminum Enclosure

H - 4.37" W- 4.12" D - 2.62"

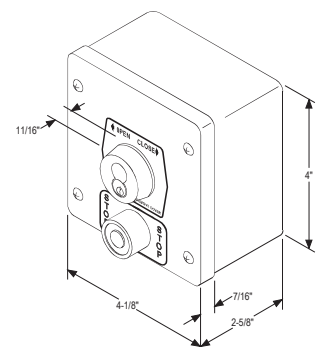


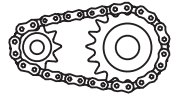
1KXS-IC



Keyed OPEN (N.O.) - CLOSE (N.O.)
Momentary Contact, Center Return
Interchangeable Core Mortise Cylinder
Accepts 7 Pin Best Core.
Stop Button (N.C.) Momentary Contact
Epoxy Powder Coated Aluminum Enclosure

H - 4.37" W- 4.12" D - 2.62"



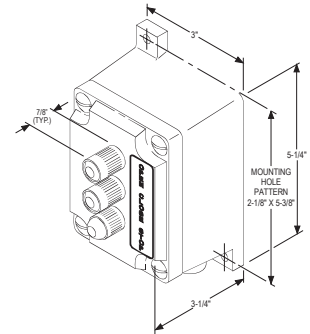


3EBX



NEMA 7 & 9
OPEN (N.O.) - CLOSE (N.O.) - STOP (N.C.)
Momentary Contact
Epoxy Powder Coated Aluminum Enclosure

H - 5.37" W - 3.00" D - 3.25"

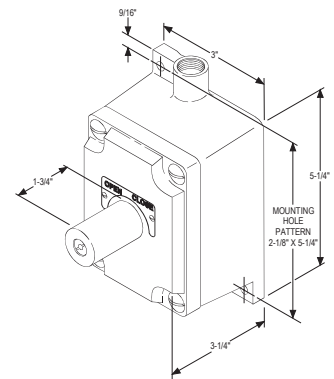


1EKX



NEMA 7 & 9
Explosion Proof Key Station
OPEN - CLOSE
Momentary Contact
Center Return
Epoxy Powder Coated Aluminum Enclosure

H - 5.37" W - 3.00" D - 3.25"

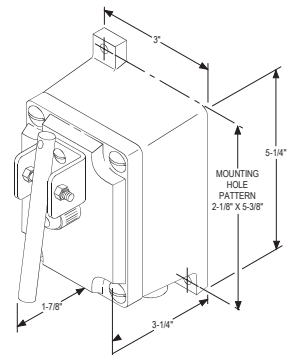


CP2X



NEMA 7 & 9
Explosion Proof Ceiling Pull Switch
DPST Momentary Contact
Epoxy Powder Coated Aluminum Enclosure

H - 5.37" W - 3.00" D - 3.25"

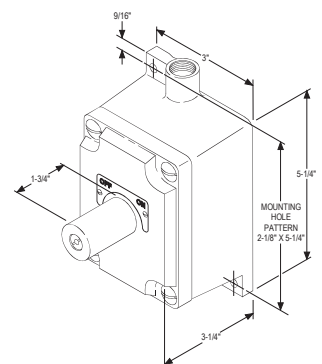


1EKXL



NEMA 7 & 9
Explosion Proof OFF - ON
Maintained Keyed Lockout
Key removable in both positions
Epoxy Powder Coated Aluminum Enclosure

H - 5.37" W - 3.00" D - 3.25"

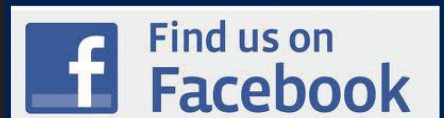


**You need it
*WHEN?!***



**With PowerMaster
Operators, the “when”
is never a problem.
Our facility is still
right here in the U.S.**

**Give us a call today with your needs.
Let us exceed your expectations!
855-810-0124**



PowerMaster Operators

powermaster

**1160 N Van Horne Way
Anaheim, CA 92806**

www.powermasteroperators.com

