

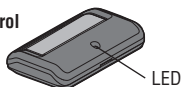


## REMOTE CONTROLS MODELS 891RGD & 893RGD

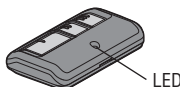
For use with Raynor Garage Door Openers that have a yellow Learn button and a yellow antenna. The code between the remote control and the receiver changes with each use, randomly accessing over a billion new codes. Refer to your product manual for the location of the learn button.

**NOTE:** Your product may look different than the products illustrated in this manual.

Single Button Remote Control  
Model 891RGD



3-Button Remote Control  
Model 893RGD



### WARNING

To prevent possible **SERIOUS INJURY** or **DEATH** from a moving gate or garage door:

- ALWAYS keep remote controls out of reach of children. NEVER permit children to operate, or play with remote controls.
- Activate gate or door **ONLY** when it can be seen clearly, is properly adjusted, and there are no obstructions to door travel.
- ALWAYS keep gate or garage door in sight until completely closed. NEVER permit anyone to cross path of moving gate or door.

## PROGRAM USING THE GARAGE DOOR OPENER

**1**

Locate the Learn button.

**2**

Press and immediately release the Learn button. The Learn LED will glow steadily for 30 seconds. Within 30 seconds...

**3**

Press and hold the button on the remote control that you wish to use.

Release the button when the garage door opener lights blink **or** two clicks are heard. If programming to other products, press the button a second time to activate the product.

## PROGRAM USING THE DOOR CONTROL

**1**

Press the LEARN button on the door control to enter Programming Mode.

The command LED will flash once.

**2**

Press the LEARN button again, the LED will flash once.

The command LED will flash once again.

**3**

Press and hold the button on the remote control that you wish to use.

Release the button when the garage door opener lights blink **or** two clicks are heard. If programming to other products, press the button a second time to activate the product.

## TO ERASE ALL CODES FROM MEMORY

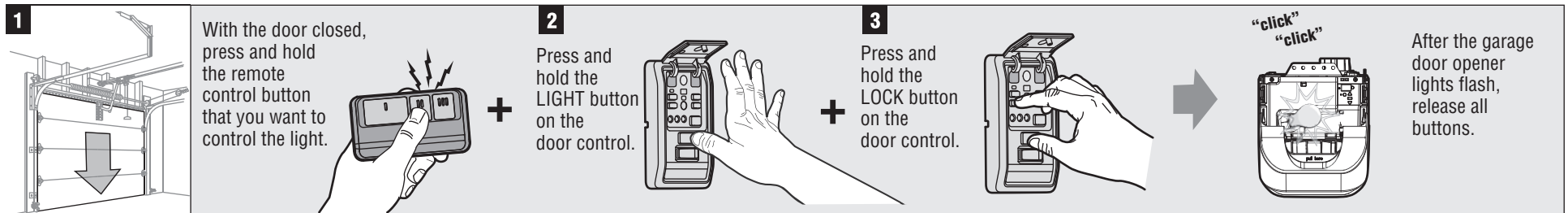
When deactivating any unwanted remote control code, all previous codes will be erased.

**1**

Press and hold the Learn button on garage door opener or other product until the learn LED goes out (approximately 6 seconds). All previous codes are now erased. Reprogram each remote control you wish to use.

## TO CONTROL THE GARAGE DOOR OPENER LIGHTS

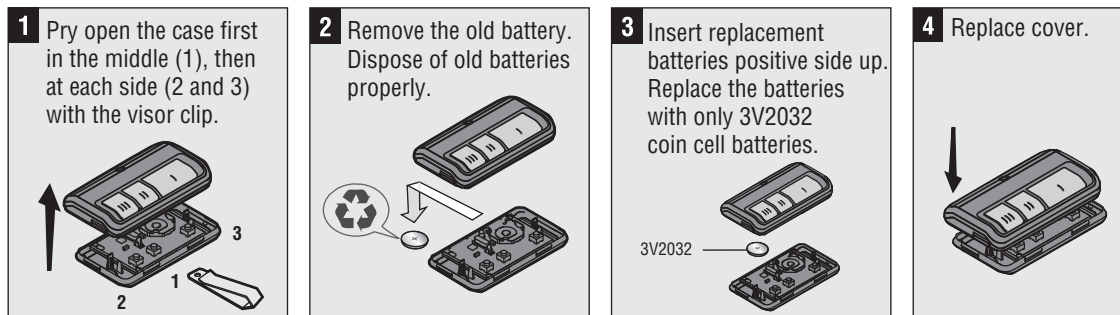
This feature is only available on garage door openers equipped with a multi-function door control and a remote control with more than one button. Not available with external receiver. A remote control button can be programmed to operate the garage door opener lights without opening the door.



Test by pressing the remote control button. The garage door opener lights should turn on or off but the door should not move.

## THE REMOTE CONTROL BATTERY

The lithium battery should produce power for up to 5 years. If the battery is low, the remote control's LED will not flash when the button is pressed. To replace battery:



## WARNING

To prevent possible SERIOUS INJURY or DEATH:

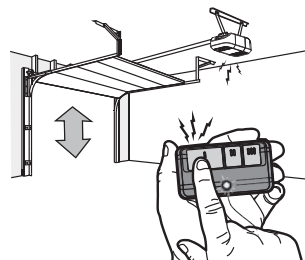
- NEVER allow small children near batteries.
  - If battery is swallowed, immediately notify doctor.
- To reduce risk of fire, explosion or chemical burn:
- Replace ONLY with 3V CR2032 coin batteries.
  - DO NOT recharge, disassemble, heat above 212° F (100° C) or incinerate.

NOTICE: To comply with FCC and/or Industry Canada rules (IC), adjustment or modifications of this receiver and/or transmitter are prohibited, except for changing the code setting or replacing the battery. THERE ARE NO OTHER USER SERVICEABLE PARTS.

Tested to Comply with FCC Standards FOR HOME OR OFFICE USE. Operation is subject to the following two conditions: (1) this device may not cause harmful interference, and (2) this device must accept any interference received, including interference that may cause undesired operation.

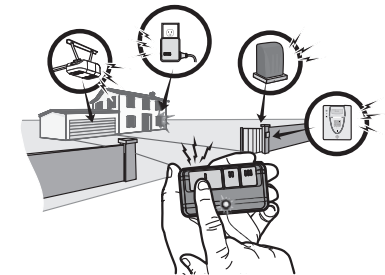
## HOW TO USE THE REMOTE CONTROL

Press and hold the button down until the door or gate starts to move. The remote control will operate from up to 3 car lengths away on typical installations. Installations and conditions vary, contact an installing dealer for more information.



## 3-BUTTON REMOTE CONTROLS

Additional buttons on the remote control can be programmed to operate up to 3 devices such as additional garage door openers, light controls, gate operators or access control systems.



## REPLACEMENT PARTS

3V CR2032 Lithium battery .....	10A20
Visor Clip .....	29B137

1-800-528-9131

114A3943

## ONE YEAR LIMITED WARRANTY

The Chamberlain Group, Inc. warrants to the first consumer purchaser of this product that it is free from defect in materials and/or workmanship for a period of 1 year from the date of purchase.